

# connecting to the heart of what matters



Fairfield County  
Community Foundation  
Annual Report Fiscal 2011



# connecting to the heart:

## What matters is feeding hungry children ...

### Dr. Gilbert Rose answered the phone on his birthday and helped change 500 young lives

As a fundholder since 1998, Gil was used to getting calls from the Foundation about giving opportunities that matched his interests.

“We’re forming a giving circle to help Bridgeport children have enough to eat during weekends,” his advisor from the Foundation said. “It’s for the Connecticut Food Bank’s Kids’ Backpack Program, and I think you’d enjoy supporting it.”

“I listened to her explanation and agreed,” said Gil, a psychiatrist and author. “Like many beautiful ideas, this is utter simplicity. School children carry home one aspect of a good life—healthy meals.”

“I said it was my birthday, and giving to the backpack program was my birthday present to myself.”

#### His “habit of generosity” was formed in childhood

Gil grew up near Boston with two sisters. “Our parents instilled in us the habit of generosity,” he said. “My philanthropy is based on example, a life of hard work, world travel—including Iron Curtain countries and primitive societies, appreciation for a benevolent country, and gratitude for a good marriage and family.”

After graduating from Harvard, then medical school, Gil served in the Army and Air Force. He and his late wife Anne moved to Norwalk in 1955, where he established a private practice. They raised four children. He now has 14 grandchildren.

#### Giving back locally completes a circle

“It’s very gratifying to give back locally,” Gil said. “It completes a circle: I receive, I give. The Foundation knows what I’m interested in, and takes care of all of the paperwork. It’s effortless.”

### No child should head home without enough to eat over the weekend

During the school year, more than 170,000 children in Connecticut – nearly 40,000 in Fairfield County – are eligible for free or reduced price meals at school. On Fridays, however, thousands go home to households where there won’t be enough nutritious food for the weekend.

These children, ages 5 to 11, return to school Monday mornings with headaches, dizziness and fatigue that sap concentration and lead to a host of other challenges.

Children who are hungry are more likely to experience health problems, miss school, repeat grades, and drop out of high school. They are four times more likely to need mental health counseling, seven times more likely to get into frequent fights, and twelve times more likely to steal.

#### Kids’ Backpack Program provides nutritious food

Connecticut Food Bank’s Kids’ Backpack Program fills this void by providing children with nutritious food for the weekend—shelf-stable milk, 100-percent juices, whole grain cereals, healthy snacks, and child-friendly entrées that can be heated in a microwave oven.

Schools identify children who need food. Every Friday, staff discreetly place food into the children’s own backpacks.

It’s a simple solution that addresses one of the root causes of a complex problem.

#### Now twice as many children have enough food

Last year, the Connecticut Food Bank provided weekend food to 402 children at 12 Bridgeport schools and 1,700 children at 70 schools statewide.

Thanks to Foundation giving circle members, this school year over 900 Bridgeport children – more than twice as many – will head home with healthy food for the weekend. Statewide, the program now includes 109 schools in 16 cities with 2,500 children receiving food.

Thanks to compassionate donors like Dr. Gil Rose, more Bridgeport children leave school on Friday wearing backpacks with nutritious, child-friendly food for the weekend.

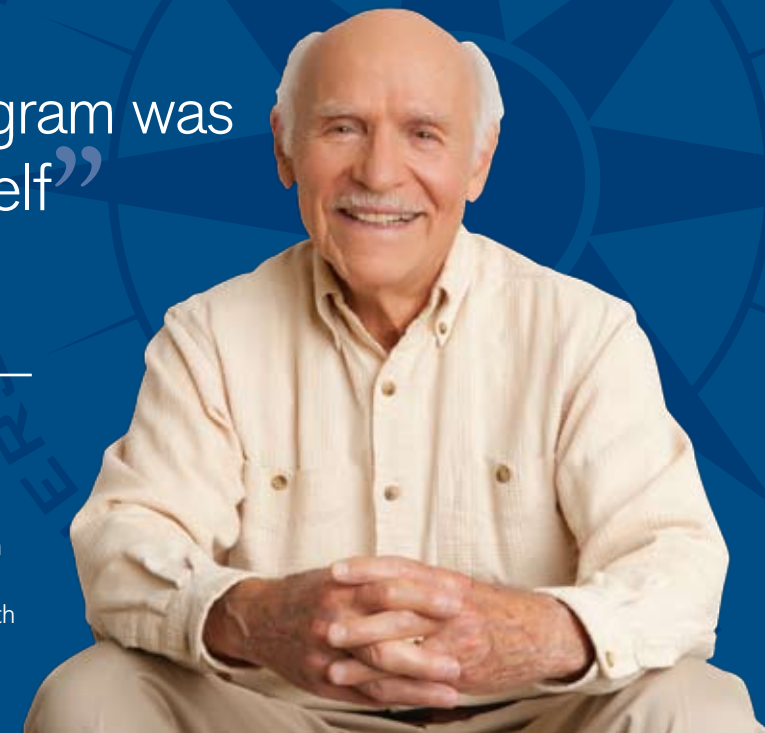
“Giving to the backpack program was my birthday present to myself”

**The Donor:** Dr. Gilbert Rose

**His Heart:** Making sure urban children have enough to eat during weekends

**His Gift:** Joining the Foundation’s giving circle for Connecticut Food Bank’s Kids’ Backpack Program

**The Impact:** Giving circle members **doubled** the number of Bridgeport children whose backpacks are filled with nutritious, child-friendly food on Fridays





# connecting to the heart:

## What matters is making a difference at home . . .

### Many want to give back to the community they love

When attorney Mike Harris meets with clients to discuss their estate planning, he often hears how much they love their community.

“So many people love their town and want to make a lasting difference,” Mike said. “They are often motivated to do just that if they don’t have close relatives.”

“Additionally, some wealthy parents set a monetary cap for their children, with the balance going to charity. And those who want to leave significant gifts to charity tend to make an endowed gift.”

### Endowed gifts make a difference for generations

Endowed gifts can benefit a favorite cause, or the community itself, for a dozen generations and more.

One woman left a large gift to the Greenwich Endowment Fund, held at the Fairfield County Community Foundation. The Fund provides grants to nonprofits that improve the quality of life in Greenwich (see pages 24-25 for funds that benefit other towns and cities in Fairfield County).

### New needs emerge over time

One of this year’s grants was to Greenwich YWCA Domestic Abuse Services.

“Thirty years ago, few would have predicted domestic disputes would be such a serious problem in Greenwich,” said Mike. “The Greenwich Endowment Fund is able to address needs like this as they emerge.”

“The Fairfield County Community Foundation is large and secure, and will be around for a long, long time. I have absolute confidence that the grants will continue to be well made.”

### This time, he wasn’t drunk

The last time Julie’s husband threw her against a wall, he wasn’t drunk. She realized, whether drunk or sober, his abuse was escalating and she had to get help.

The next day at work, fingers shaking, she called the Greenwich YWCA Domestic Abuse Services 24-hour hotline.

### The dark secret behind closed doors

Domestic violence is the second most-investigated crime in Greenwich. Income, education, ethnicity, age, gender or marital status offer no protection. Abuse is about power and control.

“You’re told you’re the perfect couple,” said Suzanne Adam, director of Greenwich YWCA Domestic Abuse Services. “But you walk on eggshells to avoid triggering an attack. You’re made to feel it’s your fault, and if you were just *better*, it will stop. But without intervention, it won’t.”

### Help is available around the clock

Help begins as soon as a licensed staff member or trained, certified volunteer answers the hotline. The caller’s safety is their first priority. Professional counselors are available around the clock to assist victims, identify strategies and develop options for each situation.

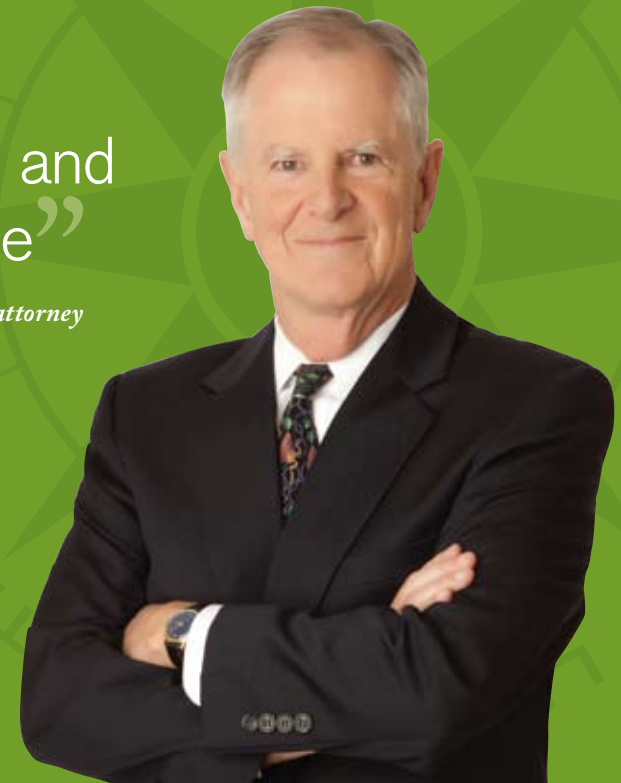
Thanks to supporters of this program—including contributors to the Greenwich Endowment Fund—the YWCA provides free shelter, supportive and therapeutic counseling, and court advocacy. It also works with Greenwich police, clergy and emergency medical responders to increase understanding of domestic abuse dynamics.

“Victims like Julie aren’t alone,” said Suzanne. “There are hundreds, and we’re here to help them.”

A grant from the Greenwich Endowment Fund helps tackle domestic abuse by supporting Greenwich YWCA Domestic Abuse Services. Gifts to a community fund at the Foundation address local needs, even as they change over time.

“So many people love their town and want to make a lasting difference”

—Mike Harris, estate planning attorney  
Ivey, Barnum & O’Mara



**The Donors:** People who call Greenwich home

**Their Heart:** Giving back to the town they love

**Their Gift:** Ensuring their community endowment fund will continue addressing needs for generations

**The Impact:** Current and unforeseen needs can be addressed for a dozen generations





# connecting to the heart:

## What matters is keeping the arts alive ...

### The arts make a community a worthwhile place to live

“Our youngest son became a classical violinist because of his grandfather,” Renée Noren said.

“My father loved music,” said her husband, Ron Noren. “Since our son was eight, he went to the symphony with my father. They’d play duets on their violins.”

Ron and Renée, donor advised fundholders, are both third-generation Fairfield County residents who grew up with music-loving parents. They believe the arts are an important part of a community’s vitality.

“A community is more than houses and businesses. What makes a community a worthwhile place to live and work is the quality of life—the things that are good for the spirit,” Ron said. “The arts provide that, especially live music.”

### “We sit in the same seats as my parents”

Ron and Renée are long-time supporters of the Greater Bridgeport Symphony. Ron served on its board for 17 years.

“My parents were committed supporters of the Symphony and bought season tickets every year,” Ron said. “We continue to support it. Renée and I are also season subscribers, and sit in the same seats as my parents.”

### Giving back to the community is part of their families’ cultures

Ron’s grandfather, Rudolph Bannow, co-founded Bridgeport Machines and felt it was important to give back to the community that helped him prosper. Renée’s grandfather was circulation manager for the Connecticut Post and served on many boards of Bridgeport organizations.

“Greater Bridgeport is a large, diverse community facing significant challenges,” Renée said. “The Symphony’s live performances unite us through beautiful, uplifting music. We’re proud to support it.”

### Music helps us make sense of our lives

Who can resist tearing up over the *Star-Spangled Banner*, swing dancing to Glenn Miller’s *In the Mood*, or feeling awed by Mozart’s *Requiem*?

Music is a way we make sense of our lives, express feelings when we have no words, and understand with our hearts what we cannot with our minds.

### When shared, music unites us

“When you listen to a musical performance, it’s a magical experience,” said Benjamin Loeb, executive director of the Greater Bridgeport Symphony. “The sound is transformed into feeling. If the audience can feel the same emotion together, there’s no reason why they can’t go out into the community and work together.”

“Music also serves as a metaphor for an ideal community—diverse people playing different instruments are brought together to work toward something greater than themselves.”

The Greater Bridgeport Symphony has been uniting the community since 1945. The 2011-12 season celebrates the 40th anniversary of its music director and conductor Gustav Meier.

### “We want more people to experience our concerts”

“This season, we’ve doubled the number of performances and cut ticket prices,” said Ben, who is also a conductor and concert pianist.

The Greater Bridgeport Symphony’s endowment fund is held at the Foundation. Even with an endowment and ticket sales, it needs the support of patrons, corporations, and foundations.

“Bridgeport without the symphony would be like a place without hope,” Ben said. “Art shows people how the world can be better, richer and more meaningful. It connects us to what’s possible.”

Generations of supporters like the Norens allow the Greater Bridgeport Symphony to continue uniting the community with live performances. Music director and conductor Gustav Meier celebrates 40 years of leading the orchestra during its 2011-12 season.

“Live performances unite us  
through beautiful, uplifting music”

**The Donor:** Ron and Renée Noren

**Their Heart:** Enriching the community's quality of life with live orchestral music

**Their Gift:** Supporting the Greater Bridgeport Symphony for a new generation of audiences

**Their Impact:** Helping unite a large, diverse community





# connecting to the heart:

## What matters is investing in brighter futures . . .

### They loved each other, their students and their community

In 1948, when Frances Hey walked into the teacher's lounge on her second day of school, fellow teacher Philip Ramer took notice. He struck up a conversation, and they married that summer.

In 1952, they moved to Norwalk where Frances taught history and Philip taught mathematics. She taught for 24 years, first at Center Junior High School, then Norwalk High School. She died in 1993.

Philip taught at Nathan Hale Middle School for 21 years. He died in 1994, nine months after his wife.

They had no children of their own.

"Frances truly loved all children and challenged them to the limits of their academic abilities," said a colleague. "Philip's students always did well when they went to high school and college."

### Frances and Philip left a gift in their will to benefit Norwalk

The Ramer Fund was established at the Foundation with a \$610,000 bequest from Philip's estate.

Since 1995, the Ramer Fund has awarded 59 grants exceeding \$485,000 to nonprofit organizations that aid Norwalk children's education, like the Carver Foundation of Norwalk.

### The Ramers will continue to teach Norwalk's children

Due to the Foundation's fiscal stewardship and investment return, the fund balance now exceeds \$1 million. Frances and Philip Ramer will continue to teach Norwalk's children for dozens of generations.

"Frances and Philip were inseparable," said a friend. "They were avid supporters of Norwalk causes, and were proud of their students. Philip grew up on a farm. He used to say that as teachers, they sowed seeds for a brighter future for everyone."

### Students get help shaping their futures

"Once these children leave our threshold, the neighborhood calls to them, video games call to them, the TV calls to them," said Dr. Lynne Moore, principal at West Rocks Middle School in Norwalk.

"The longer we can keep them in school, the better chance we have of extending their education and shaping their future."

That's why Norwalk's public middle schools and high schools welcome the Carver Foundation's PLUS Campaign to their campuses.

### Carver helps students become college-ready

This after-school program includes tutoring in all subjects, science labs, athletics, debate and the arts. Students learn how to apply to college and for financial aid. School counselors and teachers select students who would most benefit. Nearly 80 percent come from single-parent households.

The Carver PLUS Campaign works with each school in individual partnerships, bringing specific resources to each campus. Last year, Norwalk High School wanted to increase students' global awareness by connecting them to global challenges. The Carver PLUS Campaign partnered students with their peers in Sonrisa de Dios, Nicaragua and named the program NicaPhoto.

All year, students exchanged digital photos, translated stories into each other's languages, and discussed local issues on Skype. In August, six students and two adults traveled to Nicaragua to work beside their new friends on community projects.

### "These kids see a bright future"

"It's all about access and opportunity," said Novelette Peterkin, Carver's executive director. "Our kids come up with the ambition."

Richard Whitcomb, retired headmaster of St. Luke's School in New Canaan, is a Carver PLUS Campaign lead supporter. "These kids begin to believe they are capable of doing so much better," he said. "They see a bright future."

Deandre Russell shows his friend Zyaire Sellers how to measure mass and volume and calculate density. Both boys are "Carver kids" and A students. Current and remembered supporters like Philip and Frances Ramer are helping Norwalk students become college-ready.

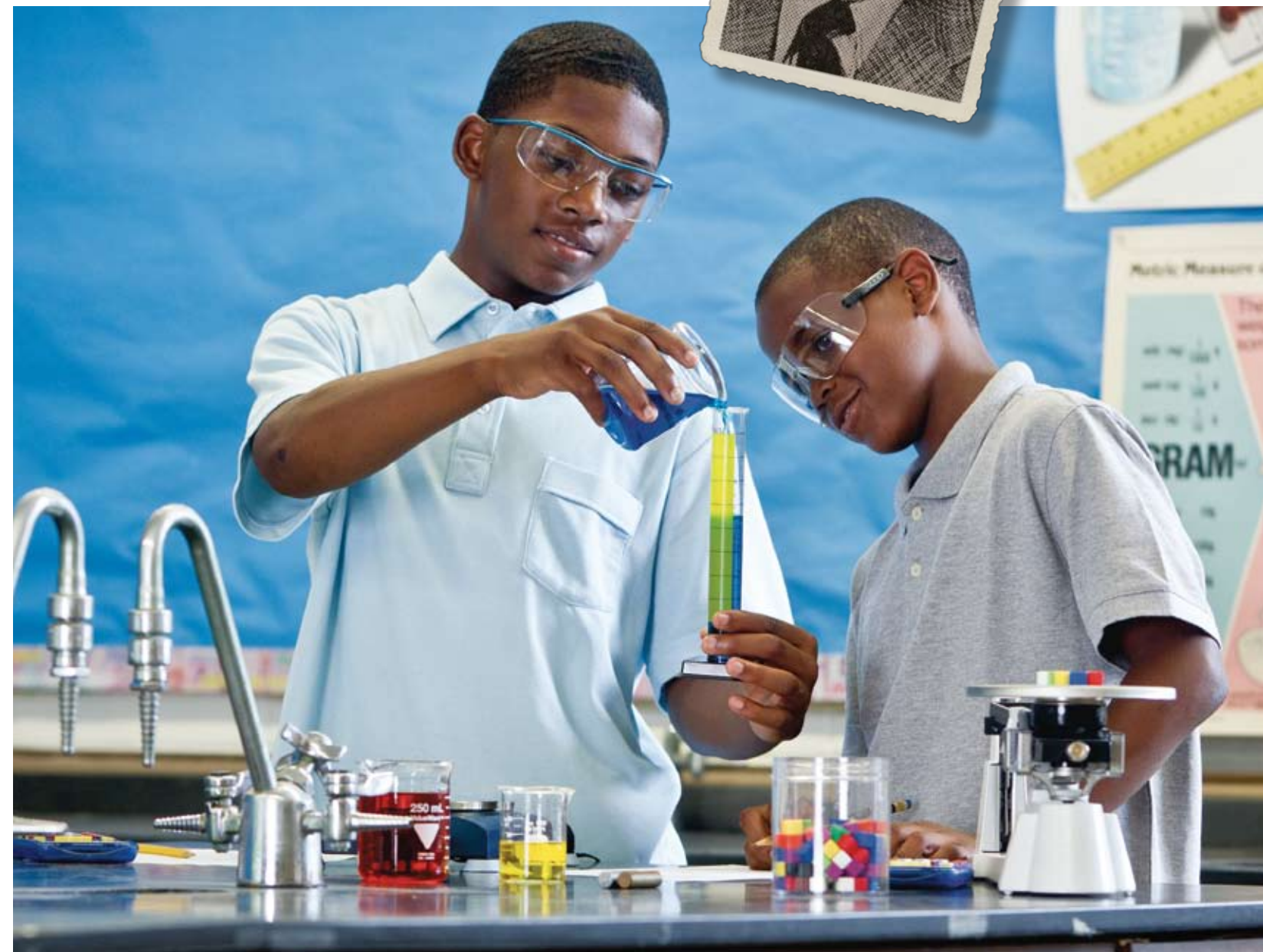
"Teachers sow seeds for a  
brighter future for everyone"

**The Donors:** Philip and Frances Ramer

**Their Heart:** Teaching students and challenging them to be their best

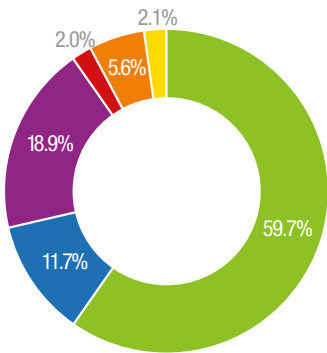
**Their Gift:** A bequest to benefit those living in Greater Norwalk

**The Impact:** Their gift helped 260 new middle and high school students participate in the Carver PLUS Campaign, and expanded it to a second high school in Norwalk. Now 435 students are getting help to become college-ready



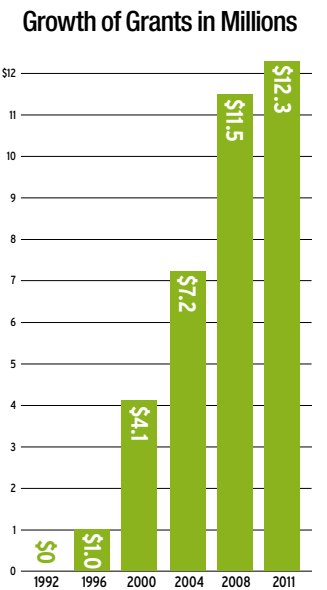


Fiscal 2011  
by the  
Numbers



Grants by Fund Type in Millions	
Donor Advised	\$ 7.3
Discretionary	\$ 1.4
Field of Interest	\$ 2.3
Agency Endowments	\$ 0.2
Scholarship	\$ 0.7
Donor Designated	\$ 0.3

**TOTAL \$12.3**  
*Above totals include agency endowments*



**\$ 12.3 million** awarded in grants

**\$ 1.4 million** brokered for additional grants

**\$ 17.6 million** received in contributions

**\$152.9 million** in net assets

Mission

The Fairfield County Community Foundation promotes philanthropy to build and sustain a vital and prosperous community where all have the opportunity to participate and thrive.

As the region’s center of philanthropy, we provide:

- Personalized philanthropic advisory services and financial stewardship to donors and partners
- Visionary leadership and strategic initiatives to address key regional issues, and
- Grants, counsel and leadership training to local nonprofits

What We Do

We help you make a difference in your own backyard and beyond in three ways:

**1. When you establish a charitable fund with us, you receive personalized philanthropic advisory services and financial stewardship to make your giving meaningful, effective and easy.**

We listen to your charitable desires, and help you create or refine your giving plan.

We connect you to local nonprofits accomplishing great things in areas that matter to you.

We share our insights and expertise on local issues, and introduce you to like-minded donors.

We professionally manage fund assets, conduct due diligence, process grants to nonprofits in Fairfield County and across the country, and handle all reporting.

**2. Tackle key regional issues through bold leadership and strategic initiatives to improve the quality of life for all.**

We provide the connective tissue between the 23 cities and towns that comprise Fairfield County. We bridge zip codes and bring together policy makers, nonprofit leaders, community leaders, private funders and other experts to address our region’s most challenging problems.

**3. Help local nonprofits become more efficient, effective and sustainable.**

We provide grants, counsel, and professional development to improve the management and performance of Fairfield County’s nonprofit organizations.

What matters is you, and  
the difference you make

Thank You, Dear Friend,

Your compassion and generosity are feeding, sheltering, healing, educating, job training, guiding, encouraging and inspiring thousands of neighbors throughout Fairfield County.

In the last year, **you helped us award \$12.3 million in grants**—a new record. This increased funding was urgently needed by nonprofits, and greatly appreciated by the families, elders, individuals and children they serve.

In addition, **you nearly doubled last year’s giving record by contributing \$17.6 million** for immediate and future giving—an extraordinary 95 percent increase.

These pages present a sample of what your giving is accomplishing. These stories represent the aspiration you and we share for making Fairfield County a home where all have the opportunity to participate and thrive.

It has been an honor to serve you and a privilege to share your philanthropic journey. On behalf of those whose lives you’ve changed—and continue to change—we thank you for connecting to the heart of what matters.

Sincerely,

Barry C. Hawkins  
*Chair, Board of Directors*

Susan M. Ross  
*President/CEO*

Contents

10	New Funds
15	Regional Initiatives
17	Contributors
23	Funds
28	Discretionary Grants
37	Grants
40	Governance, Committees
42	Advisory Council, Professional Advisors
43	Community Friends, Staff
44	Financial Highlights

Thank You, Susan and Barry

The Foundation extends deep gratitude to Susan M. Ross, who, in September 2011, completed 15 years as president and CEO.

Three highlights of her leadership include awarding \$123 million in grants, increasing the Foundation’s assets from \$10 million to \$153 million, and merging the Foundation with the Greater Bridgeport Area Foundation.

We also thank Barry C. Hawkins, who, in October 2011, completed his two years of service as our board chair.

During his tenure, the Foundation completed a research study and report on the recession and how local nonprofits were affected, began education advocacy, and conducted a nationwide executive search for our new president and CEO.

Welcome, Juanita and Sheila

In October 2011, Juanita T. James became the Foundation’s president and CEO.

Juanita brings the experience, vision and passion to guide the Foundation to new heights of serving you and the region.

We also welcome long-time and ardent supporter Sheila A. Perrin as our new board chair.

She brings extensive Foundation knowledge from serving on our board and numerous committees for 13 years, as well as her own philanthropic expertise as president of the Perrin Family Foundation.



(left to right):  
Barry C. Hawkins,  
Susan M. Ross,  
Juanita T. James  
and Sheila A. Perrin

## New Funds

We make your charitable giving meaningful, effective and easy.

You can establish and name a fund at the Foundation, then support your favorite causes anywhere in the country (types of funds are described on pages 23-26). In addition, you can give to collective funds at the Foundation that match your charitable passions, or support our initiatives that tackle regional problems. Anonymous giving is also possible.

If you already have a charitable passion, we introduce you to corresponding nonprofit organizations in Fairfield County. If you don't, we can help you focus your philanthropy to support values important to you.

Depending on your level of engagement, you're invited to guided visits of local nonprofits, donor briefings and special conferences. We advise you about new giving opportunities that match your interests. In addition, you have access to our research, including program evaluations in your fields of interest.

You are freed from drafting documents, accounting and reporting requirements. Your contributions are professionally managed and overseen by the Foundation's Investment Committee and Board of Directors. As one fundholder said, "This is smart philanthropy."



### The Dr. Ellen Hosiosky Fund

Throughout her life, Dr. Ellen Hosiosky was always interested in learning and expanding her boundaries.

A German immigrant who came to the U.S. at a young age, Ellen focused on her education and career.

Among the first women to graduate from the Columbia University College of Dental Medicine, Ellen became a consummate student while also serving as a mentor to many women entering professional careers in the health field.

Even at age 96, her thirst for new experiences and learning continued. Ellen, who taught so much to so many, again became a student, learning pilates and movement therapy from Simona Cipriani of Stamford. The pair quickly became close friends.

When Ellen died, Simona and her husband Joseph Muscolino were honored to be chosen as advisors to the Dr. Ellen Hosiosky Fund, established at the Foundation through a bequest. They hope to use the fund to continue Ellen's legacy by supporting and promoting education in movement therapy, serving as mentors and helping others, just as Ellen helped them.

"It's not easy to find people at that age who have the same excitement to keep learning that Ellen did," said Simona.

### The McDonald-Wright Family Fund

The McDonald-Wright Family Fund is a donor advised fund.



### The Safe Harbor Fund

When Karen Royce was selling her home, she wanted to put aside some of the proceeds to benefit those most in need.

Coming from a family with a tradition of giving back, Karen knew she had the opportunity to effect change in her community and beyond.

The Safe Harbor Fund supports human and social services that "level the playing field for people who do not have the same opportunities." It also funds performing arts programs to nourish the creative force that is so important in our lives.

Having traveled to northern Tanzania with her church, Karen has witnessed how addressing basic needs can make an incredible impact. The church has built four primary school classrooms in a remote Maasai community, helping 180 children get the early foundation they need to go on for advanced government-funded education in middle school.

With this project and her more local philanthropy, the Community Foundation is the perfect partner.

"I didn't want to have the responsibility or hassle of setting up a separate foundation, and that's what drew me to the Community Foundation," she said. "The Foundation has a great reputation and a donor advised fund offers a convenient solution to managing my giving."

### The Eliza Oliver Memorial Scholarship Fund



Jane Elizabeth Oliver, called Eliza, was a teacher who inspired her students, opened their eyes to the possibilities in life, and made learning exciting.

Following college, Eliza returned to her alma mater, Rowayton Elementary School, where she taught for 15 years. She passed away in September 2010 at age 40.

"From the letters we received from parents and students, it was clear they all felt the love and enthusiasm Eliza brought to the classroom," said her parents, Jane and Bob Ready. "The kinds of moments they had in Eliza's class will be with them forever."

In memory of their daughter, and to encourage future teachers like Eliza, Jane and Bob established the Eliza Oliver Memorial Scholarship Fund at the Foundation. The scholarship will be awarded annually to a senior who attended both Rowayton Elementary School and Brien McMahon High School, and plans to devote his or her life to teaching.

The first scholarship recipient, Lauren Wachnicki, was described by her teachers as bright, determined and passionate about education.

"She's the kind of person that Eliza would have taken under her wing and mentored as a new teacher," Eliza's parents said. "Wherever they teach, it's a fitting legacy to Eliza's memory that this scholarship will help students attend college and become the kind of teachers that stress the importance and love of learning. That's what Eliza really stood for."

### The Grossman Family Fund

The Grossman Family Fund is a donor advised fund. It was established to improve the lives of low-income children. The fund's grant awards are focused primarily in Connecticut.

### The Senator ALJ Scanzillo Scholarship Fund

The Senator ALJ Scanzillo Scholarship Fund was established at the Foundation with a gift from the estate of Joan T. Diedolf.

The fund will provide scholarships to Bridgeport residents of Italian descent, helping them pursue a degree in political science or pre-law at the University of Bridgeport.



### The Higher Ground Fund

The Higher Ground Fund is Grammy Award-winning musician John Mayer's second donor advised fund with the Foundation.

The fund will provide grants to organizations that serve returning military and their families.

### The Zac and Amanda Zeitlin Fund

The Zac and Amanda Zeitlin Family Fund is a donor advised fund at the Foundation.

### The Outreach Fund

The Outreach Fund is a donor advised fund at the Foundation.



### The Colleen Doyle Britt Education Fund

A resident of Easton for over 30 years, Colleen Doyle Britt raised a family, ran a business and was a dedicated member of her community.

Colleen operated the Gregory F. Doyle Funeral Home, a business started by her mother and father, and was known for her compassionate support and devotion to the grieving, who she often referred to as "her families."

She was also actively involved in the community, supporting and volunteering with Fairfield University, Brooklawn Country Club and the Devon Beautification Project. She and her family were parishioners of Notre Dame of Easton and St. Ann's Church in Devon.

When she died in October 2010, Colleen's family and friends established a fund in her memory. The Colleen Doyle Britt Education Fund will support local schools and education initiatives.

Particularly important to the family are Saint Gabriel School, Luralton Hall, Fairfield College Preparatory School and Fairfield University.

"Colleen believed in education. She used to say, 'There are only two things you can give to a child: love and an education'," said her husband, William Britt.



# connecting to the heart:

## New Funds

(continued)

### The John and Barbara O'Connor Education Fund



Whether John O'Connor was coaching Bridgeport youth hockey players at the Wonderland of Ice on cold winter mornings or his wife Barbara was introducing her children to great writers or the importance of current events, the two of them were constantly teaching.

John and Barbara tirelessly urged their eight children and countless other young people to work hard and live up to their potential.

Their children established a fund in honor of John and Barbara to provide mentoring and scholarships to Bridgeport high school students, cultivate their drive to attend college and support them through graduation.

John and Barbara lived much of their lives in Fairfield and were deeply involved in the Greater Bridgeport community. John was a founding partner in insurance agency Beardsley Brown & Bassett, a long-time leader in the United Way, and a dedicated alumnus of Fairfield University. Barbara, a graduate of the University of Connecticut-Storrs and grammar school teacher, shared John's passion for helping young people advance their education.

When Barbara died unexpectedly in 1980, John intensified his efforts to help those in need. His volunteer work encompassed a variety of causes, yet time and time again he focused on Bridgeport's youth. John passed away in 2010.

"Mom and Dad knew that many of these kids never dreamed of going to college," said their eldest son, David. "This fund is the perfect way for us to honor our parents, and keep their energizing spirit alive for deserving kids."

### The Fund for Great Leadership

Established by members of the Foundation's board in honor of Susan M. Ross, President & CEO from 1996-2011, The Fund for Great Leadership is a field of interest fund focused on strengthening community, philanthropic and nonprofit leadership throughout Fairfield County.

"The strength and health of our communities is directly tied to the strength of the people and organizations tackling the region's most urgent needs," Susan said. "By providing resources, training and support to our community, philanthropic and nonprofit leaders, The Fund for Great Leadership will help ensure a strong and vibrant Fairfield County where all have the opportunity to thrive."

Grants from the fund will be directed to programs and initiatives that strengthen leadership throughout the region. Stewarded by the Foundation, and open to gifts and donations from individuals and corporations, the fund's principal will grow over time, providing ongoing support to address changing leadership needs in Fairfield County.



"I have always believed that, more than any other community in the United States, Fairfield County can be a model of exceptional opportunity and participation—a shining city on the hill, with the eyes of the world upon us."

—Susan M. Ross, Easton

### The Sheila and Charles Perrin Fund



The greatest challenges facing Fairfield County change over time and the future needs of its residents and communities are never certain.

Fifty years ago, few would have guessed the lack of affordable housing would be a chief threat to the economic vitality of the region. Thirty years ago, concern over the health of Long Island Sound and its watershed was little more than a passing thought. Ten years ago, unemployment and job re-training were not an issue during a booming financial cycle.

As an unrestricted fund, the Sheila and Charles Perrin Fund provides the flexibility and perpetual support that allows the Foundation to award grants and address the most pressing needs, whatever they may be.

"Who knows what the future holds? While some issues will always remain important, other challenges facing our communities and most at-risk residents will change over time," said Sheila Perrin, incoming chair of the Foundation's board. "The Foundation is the only organization of its kind in Fairfield County that serves the region as a whole, has the ability to step back and take a strategic look at the greatest needs and then bring to bear the resources and expertise to address the heart of the matter."

Grants from the fund will be determined by Foundation staff and directed to programs and initiatives that make the biggest impact.

### The Dan Levinson Charitable Fund



After a successful business career, Dan Levinson decided to focus his energy, skills and resources on nonprofit work. Drawing from his early childhood in New York City in the 60s, where "my mom took us marching on everything," Dan felt challenged to focus on things that really matter.

Three years ago, he co-founded Green Village Initiative (GVI), a Westport-based nonprofit focusing on community-building and environmental projects in Westport and surrounding towns. The organization tackles local projects that are actionable, address critical environmental and sustainability challenges, and bring people in the community together to achieve results.

GVI's projects include establishing town farms and vegetable gardens at public schools in Bridgeport and Ridgefield, improving water quality and protecting local rivers and watersheds, and a variety of community-building projects in partnership with other nonprofits and state and town agencies.



# connecting to the heart:

## New Funds

(continued)

GVI has received awards from the Boy Scouts, the Environmental Protection Agency, the town of Westport and the state of Connecticut. Learn more at [www.gogvi.org](http://www.gogvi.org).

The Community Foundation's staff and expertise were instrumental in helping Dan and GVI. Its stewardship of his charitable fund is an extension of that service and knowledge.

"I consider the Foundation one of the best kept secrets in local philanthropy," he said.

### The Captain Morgan First Mate Fund



In October 2010, Captain Morgan announced the formation of the First Mate Fund, which was developed to benefit charities that support responsible drinking, as well as other community organizations nationwide.

In conjunction with its One Million Poses campaign, the brand donates \$1 to the fund for every iconic Captain's Pose struck by consumers, who are encouraged to upload a photo of their pose on the brand's Facebook page, [www.Facebook.com/CaptainMorganUSA](http://www.Facebook.com/CaptainMorganUSA).

Supermodel Marisa Miller teamed up with Captain Morgan to serve as the face of the First Mate Fund, traveling the country encouraging consumers to strike the pose for a worthy cause.

To date, Captain Morgan has given nearly \$500,000 to deserving organizations including Designated Drivers, Inc., Operation Economic Freedom, Gridiron Greats, and others, with the goal of donating \$1 million to charity.

### The Eric and Sasha Vincent Family Fund



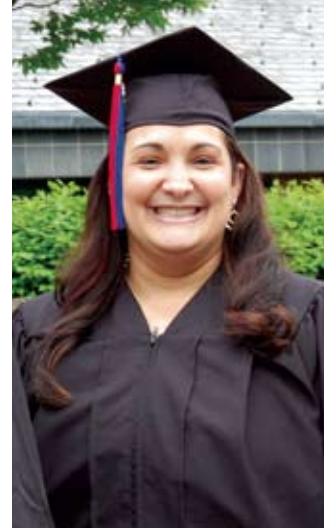
As parents of young children, Eric and Sasha Vincent have a passion for organizations which focus on children's issues and education.

Since moving to Greenwich in 2007 with their children – Sofia, 7, Lucas, 5, and Katia, 3 – Eric and Sasha have found a community and a home. As they spent more time in the community, they realized that not all families in Fairfield County have the same opportunities.

"Even in some of the less obvious places, there are disparities in income and children whose needs aren't being met," Eric said.

Supporters of Kids in Crisis, Eric and Sasha are working with the Foundation to learn about other opportunities to make a difference for children in their backyard.

"Both of us feel very fortunate to be where we are today. We realize we had help and support along the way and want to provide those same opportunities to others."



Vennette "Neena" Perez was abused as a child, pregnant at 15, and barely graduated from high school.

Yet on May 19, 2011 this single mother stood tall as she told fellow Norwalk Community College graduates and family members that one can triumph over hardships.

Neena is a student in our Fund for Women and Girls' Family Economic Security Program at Norwalk Community College, where she earned an A.S. degree in Restaurant/Foodservice Management. She was the class speaker at the graduation ceremony.

In addition to earning a 3.9 grade point average, this single mother started her own catering business while caring for her children and running a household.

"I can't believe it!" Neena told the crowd. "I walked into these doors in 2007 as a desperate woman and I'm leaving as class speaker. Who does that? I'm shooting for the stars! I'm going for it!"

## Regional Initiatives Help You Tackle the Most Critical Needs

Fairfield County's most challenging problems are too complex to address alone. One of the roles of a community foundation is to be a community leader in tackling critical issues.

We act in multiple ways:

- Research and identify critical local issues where philanthropy can make a significant difference
- Share our research and raise awareness
- Bring together community leaders, policy makers, nonprofit leaders and experts to collaborate on solutions
- Provide grants and recruit other funders
- Measure and evaluate progress, and promote necessary course corrections

Currently, we are leading three regional initiatives. We invite you to join us in transforming lives in your own backyard.

### Helping Women Achieve Economic Security for Their Families

In Fairfield County, 21,000 households are headed by women with children under 18. To just "get by" in Fairfield County, a single parent with two young children needs an income of at least \$60,000.

Yet women who work full time in Fairfield County earn a median income of \$48,900.

Higher education is a proven path to better earnings, yet a college scholarship isn't enough for women supporting dependents. Juggling child care, work, class attendance, study time and running a household make it nearly impossible to pursue the education they need to move up to better-paying careers.

### Solution: The Family Economic Security Program

The Foundation's Fund for Women and Girls initiated a partnership with Norwalk Community College and the Norwalk Community College Foundation to launch the Family Economic Security Program, an adaptation of the Annie E. Casey Foundation's Center for Working Families model.

In this five-year pilot program, qualified students receive personal coaching and financial assistance to help them earn an Associate degree, a Bachelor's degree, and ultimately achieve family-sustaining employment.

At the end of five years, the goal is for 100 students to earn their Associate degrees and move up to better paying jobs, or enroll in a four-year college to earn their Bachelor's degrees then enter careers that pay a family-sustaining salary.

**Results to date:** Eighty qualified students have enrolled in the program. Of those, 24 have graduated from Norwalk Community

College, and eight are attending four-year colleges.

In addition, participants have improved their financial profiles, course completion rates, and grade point averages.

**How you can help:** Contribute to the Foundation's Fund for Women and Girls; volunteer to mentor a student in the program; deliver a career development workshop; bring a friend to the Fund for Women and Girls' annual luncheon on April 4, 2012.

### Helping Urban Children Succeed in School

Four years ago, the Foundation's research revealed that by 2012, half of the principals leading the 92 public schools in Bridgeport, Danbury, Norwalk and Stamford would be eligible to retire, and there were few qualified, local candidates to take their place.

**At stake:** the education and futures of 60,000 children already facing one of the largest achievement gaps in the nation.

### Solution: The Urban School Leaders Fellowship

To turn this crisis into an opportunity, the Foundation brought together the four urban school districts, the Connecticut Center for School Change and the University of Connecticut's Neag School of Education to design a program that trains a new generation of urban school principals.

While good teachers are crucial, it's the school principal who establishes the vision for the school, creates its culture and is the instructional leader. The principal inspires teachers and staff to excel, recruits parents and the community to help children succeed, and creating a nurturing environment where children feel safe and can reach their potential.





Mark Woodard, principal of Toquam Magnet Elementary School in Stamford, is shaping the lives of 600 children each year.

Mark is one of 62 graduates of the Foundation's Urban School Leaders Fellowship, an initiative that trains future urban school principals.

"Working in an urban school district gives me the benefit of facing its diverse challenges, being a part of a gathering of cultures, and the prospect of making a difference in the lives of students who may need it the most."

## Regional Initiatives Help You Tackle the Most Critical Needs

(continued)

Thanks to your generosity, the Urban School Leaders Fellowship was created with the goal of training at least 60 qualified, committed and impassioned future principals to lead public schools in Bridgeport, Danbury, Norwalk and Stamford.

The one-year Fellowship program augments academic preparation. One program graduate said, "In grad school I learned how to run a school on a day-to-day operation. This program taught me how to become a transformational leader." Another said, "This program gave me a greater grounding in my role as a principal than my Ph.D. did."

**Results to date:** As of June 2011, 63 Fellows have graduated. Twenty-six Fellows—41 percent—have been promoted to positions of school principal, assistant principal and other leadership roles.

**Next steps:** A coaching program to support newly promoted principals and further develop their skills in their challenging first years leading schools.

**How you can help:** Contribute to the Foundation's Fund for Academic Excellence.

### Strengthening Local Nonprofits

Fairfield County's nonprofit organizations provide important and essential services to those in need.

They also employ 40,000 people — 11 percent of the region's workforce.

As government funding is slashed, residents and communities rely more heavily on nonprofits. Yet too often their effectiveness and sustainability are hampered by insufficient funding for operating expenses, leadership development and management training.

### Solution: The Center for Nonprofit Excellence

Thanks to the support of people like you, the Foundation's Center for Nonprofit Excellence helps Fairfield County nonprofits become more efficient, effective and sustainable.

We award grants and offer workshops in strategic planning, fundraising, leadership development, program assessment, and other topics. We also bring together nonprofits to meet, exchange ideas and best practices and explore possibilities for working together. This support helps nonprofits improve the services they provide, raise more funds, operate at peak efficiency and improve their results.

This year, the Greater Danbury Nonprofit Resource Center joined the Foundation's Center for Nonprofit Excellence to create one robust, central resource for all of Fairfield County's nonprofits.

**Results to date:** In the last year, 707 executive directors, board chairs and staff members from 523 local nonprofits attended 23 workshops covering donor relations, building corporate alliances, fundraising, social media, executive transitions, communications, board governance and more.

**How you can help:** Contribute to the Foundation's Center for Nonprofit Excellence; contact us about creating and presenting a workshop.



"We support the Foundation's community leadership work because it strengthens our nonprofits' ability to fulfill their individual missions. With one gift to the Foundation we can positively impact the good efforts of many community organizations."

—Betsey & Arthur Selkowitz, Stamford

## Contributors to Our Community Leadership Work

The Foundation envisions a Fairfield County where communities are vibrant and sustainable, and all enjoy opportunities to participate and thrive.

To that end, we develop and lead regional initiatives that tackle critical community issues. In addition, we help local nonprofit leaders strengthen their leadership and management skills so their organizations can be even more effective.

We are grateful for those who contribute to this community leadership work.

### Leadership Gifts

We are honored to recognize and thank these generous individuals, private foundations and corporations for their significant gifts:

Anonymous (2)

Guilford Fund

Lone Pine Foundation, Inc.

Ann S. Mandel

Susan & Stephen F. Mandel Jr.

MBI, Inc.

The Edward S. Moore Family Foundation

P.B.O. Fund

Sheila & Charles Perrin

Seabreeze Foundation

David J. Sullivan III & Dr. Gioia J. Riccio

### Key Supporters

We are pleased to recognize and thank these contributors for gifts that support our community leadership work:

Peggy Anderson

Anonymous

Bernicestine M. & Harold Bailey

Joan & Ed Barksdale

Allan & Nancy Bernard

Ed & Jane Bescherer

Bharucha Charitable Foundation

Deborah S. Breck, Esq.

Bridgemill Foundation

Sandra J. Brown

John & Anita J. Caggiano

David & Anne C. Campbell

Joel & Neva Cheatwood

Hon. John P. Chiota

Andrew M. & Carole G. Clarkson

Kimberly B. Davis

Delco Associates, Inc.

John & Mary Donohue

Christopher Douglass

Mr. & Mrs. Karl H. Epple

Marie Fauth Charitable Fund

Eileen & Lou Fernous Jr.

George A. & Janet C. Ferrera

Fiscus's Alexis de Tocqueville Society Fund

Mary-Jane Foster & Jack E. McGregor

Dorothy Fox

Madeleine G. Fox

W. Michael & Ellen Funck

William O. & Faith Gray

Stephen K. & Janet McCarthy Grimm

Mrs. James Hoban Harris

Mike & Sally Harris

Myrna Gould-Harrison & Edward E. Harris

Barry C. & Lilyan Hawkins

Peter & Jackie Heneage

James A. & Mary Himes

Michael & Hazel Hobbs

Joseph & Sharon Hoffman

Pat & Shirley Howe

Richard M. & Janet L. Hoyt

Bruce & Michele Hubler

Impact Personnel, Inc.

Troy & Diane Jellerette

Mary Lee & Jack Kiernan

The GB Knecht Foundation

James B. & Hope M. Kobak

Anahaita Kotval

League of Women Voters of Fairfield

Barbara Leonhardt

Michelle Lesko

Harold Levine

Natalie & Frank Lyon

The Malkin Fund

Phyllis G. & Philip R. Marsilius

Matson Financial Advisors, Inc

Peter T. & Janet Mott

Wafaa Naggar

Don & Sara Nelson

Janet & Alan Nevas

Loretta Nolan, CFP, AEP

Ronald & Renee Noren

Jeffrey J. Orum

The Overbrook Foundation

Janice Park

Patrick Foundation

Kim Pendergast & Joseph Lazaroff

Sheila & Charles Perrin

Gregory & Jane Perry

Robert & Patricia C. Phillips

Marianne & Edward B. Pollak

Allen A. Raymond

Thomas V. & Marianne B. Reifenheiser

Hans F. Reiss

Sharon Reiss Closius

Relyea Zuckerberg Hanson, LLC

Gioia F. Riccio

Elizabeth & John T. D. Rich

Robert N. Rich

Lunsford & Bea Richardson

John W. & Pamela W. Ritter Jr.

Daniel K. & Betty Roberts Family Foundation

Jeffrey & Kathy Rold

Joan Rosenbaum

Susan M. Ross & Charles MacCormack

Gene J. & Dae Rubino

Everett M. & Sarah E. Schenk

Richard Seclow

Betsey & Arthur Selkowitz

Viola Spinelli

Francine Stein

Douglas & Caralyn Stevens

John & Cindy Vaccaro

Jimena Vignola

Hon. David M. Walker & Mary E. Walker

K. M. Walker

Helen B. Wasserman

Curtis & Katharine Welling

Linda F. & John R. Whitton III

Ernest A. & Lee Wiehl Jr.

Martin Wolf

Jon R. & Lauren Zirn



# connecting to the heart:



“None of us live in a little clustered shell. We’re all affected by our communities and our neighboring communities. The Fairfield County Community Foundation is in a unique position because it deals with the entire region and knows the critical challenges facing the county and the organizations working to address them.”

—Nancy C. Brown, Greenwich

## Contributors to Foundation Funds

We are grateful and thank all who have made a contribution to one or more funds at the Foundation. We recognize those who gave \$250 or more.

The 1830 Family Foundation, Inc.  
J.C. & S. Adams Fund of the  
Community Foundation of  
Jackson Hole  
Michelle Adkins  
Marian Clark Adolphson  
Sara Allard  
Almira Family Foundation  
Alpson Inc./Porto Funeral Homes  
Cheri Amado  
Andrews Family Foundation  
Andy & Bill Concerts, LLC  
Anonymous (9)  
Helen Appleton  
Anne & Peter Ardery  
Andrew Arno & Janis Arno Jtwros  
Courtney Arpano  
Anne M. Asher  
Kim Athan  
Jocelyn D. Ault  
Mr. & Mrs. Thomas S. Aury  
Richard A. & Nancy Axilrod  
David F. & Lucy Ball  
Bank of America Charitable  
Foundation, Inc.  
Louis F. & Virginia C. Bantle  
Charitable Foundation, Inc.  
James R. & Kaye E. Barker  
Joan & Ed Barksdale  
Colleen Barnswell  
Steven & Tammy Barry  
Jim & Ellen Bassett  
Laura Weintraub Beck, Esq.  
Shelley Behrman  
George B. & Mary L. Beitzel  
Irwin Belk Educational Foundation  
George & Carol Bello  
Dana & Leigh Benson  
Andre M. & Caren L. Berk  
Alan Bernstein  
Edwin A. & Jane Bescherer  
Beth El Cemetery Association  
The Bethel Performing Arts  
Center  
Milton I. & Pamela C. Bickle  
Richard A. Bieder  
Judith L. Biggs  
Terry Birdsong  
Barbara Blauvelt Morlang  
Bluenose Foundation  
BNY Mellon Community  
Partnership  
Barbara A. Bodine

Jessica Bodine  
Polly Boeschstein  
Lee Ann & Duane C. Bollert  
Maya Boreen  
Timothy A. & Barbara F. Boroughs  
A. John Boudreaux  
Mrs. Michael Boyd  
Jane Boyle  
Greater Bridgeport Bar  
Association, Inc.  
Spencer & Dulcy Brainard  
Elisabeth H. Breslav  
Edie Brickell  
Bridgemill Foundation  
Amanda Briggs  
Louis J. Briskman  
Members of Colleen Britt's Bridge  
Club  
Kiley E. Britt & William R. Johnson  
William J. Britt, Esq.  
Charesa Brittain  
Mary Brock  
Harry Brodbeck Trust  
Louise Brooks  
Friends & Members of Brooklawn  
Country Club Caddies  
Brown Brothers Harriman Trust  
Company of Florida  
Nancy C. Brown  
Patricia T. & Douglas L. Brown  
Ruth W. Brown Foundation  
William H. & Carol D. Browne  
Susan Brownwood  
Marianne F. & William B.  
Buchanan Jr.  
Whitney Bullard  
Elizabeth H. Burke  
Donna & Robert Byrnes  
David & Anne C. Campbell  
Cardinal Shehan Center  
Carl Marks Foundation Fund  
Paul G. Carpenter, M.D.  
G.C. & Nan R. Cartwright  
Leslie H. & Timothy S. Case  
Center for Women and Families of  
Eastern Fairfield  
Jennifer Cephus  
Karen L. & Edward Chaplin  
Joel & Neva Cheatwood  
Hon. John P. Chiota  
Amy & John Cholnok  
Chubb Group of Insurance  
Companies

Citibank, F.S.B.  
Rona & Jeffrey Citrin  
Sheila Clancy  
Andrew M. & Carole G. Clarkson  
Vidal S. Clay  
Paula Cleary  
Jeanette Clonan  
The Steven A. & Alexandra M.  
Cohen Foundation, Inc.  
Richard N. & Ann R. Cohen  
Vincent J. & Patt Como  
Connecticut Performing Arts  
Partners - The Meadows Music  
Theatre  
Diane & Victor S. Consoli  
Janet O'Connor Cornell  
Mary Corson & Jonathan Sackler  
Susan C. & Robert Cotter  
Leonard & Anne C. Cotton  
Lloyd B. & Eleanor J. Cox Jr.  
David & Jane Crandall  
Vicki & David Craver  
Virginia Crawford  
Linda C. & Robert H. Cremin  
John & Jean Crocco  
Samantha Van Horn Cross  
Dawn Crouch  
Cuisse Fund  
Georgia Davala  
Barbara Benton Davis Fund  
Kathryn & Edward G. Davis  
Laura Davis  
Anne Noel Dawson  
Ginny & Christopher Day  
Kelly DeGulis  
Margaret Deluca  
Roberta D. Bowman Denning &  
Steven A. Denning  
Diageo  
Amelia & David M. Dickson  
The Diebold Foundation, Inc.  
James and Judith K. Dimon  
Foundation  
Brian & Laurie Doherty  
Christopher Douglass  
Amy C. & Tony Downer  
Greg Doyle  
Mary Jo & Jeffrey R. Dunne  
Nancy & Donald S. Dworken  
Martin A. Dworken, Esq.  
Bonny L. & Joseph R. Edwards  
Kevin C. & Kathleen Eichler  
Marguerite Embry

Mr. & Mrs. Karl H. Epple  
Kenneth & Wendy Epstein  
Mary A. Erlanger  
Hanna G. Evans  
ExxonMobil Foundation  
FactSet Research Systems Inc.  
Family and Children's Agency  
Anna Czekaj Farber & Jonathan  
Farber  
Olivia Farr  
Marie Fauth Charitable Fund  
Susanah Fayyaz  
Carol Fedele  
Eric N. & Anne Ferguson  
Virginia Ferrarese  
Sandi & John Fifield  
Jesse & Betsy Fink  
Gayle Fisch  
Fiscus's Alexis de Tocqueville  
Society Fund  
James P. & Jane Flaherty  
April Foley  
Forester Capital, LLC  
Mary-Jane Foster & Jack E.  
McGregor  
Dorothy Fox  
James & Jane Fox  
Jennifer Frascella  
Mika & David N. Frechette  
Frosty & Donald R. Friedman  
Wendy Friedman  
Audra Frumin  
W. Michael & Ellen Funck  
FX Options Trading  
Joseph P. Ganim, Esq.  
Elizabeth & Drew Gareau  
GE Capital  
Gelber Foundation  
Marty & Jeff Gendell  
Georgetown Chrysler Jeep Dodge  
Edward F. Gerber  
Christine Stiassni Gerli  
Ann W. Gibb  
Marty & Roger Gilbert  
Nancy M. Gilbert  
Amy J. & John Gillis  
William H. & Emily Gindin  
Global Impact  
Arthur B. & Barbara M.  
Gnaedinger  
Mary Kate Gobleck  
Hanneke & Wouter Goedkoop

Beth & Arthur Golden  
Lori A. & Peter Gonye  
Tracy Goodnow  
Kristine & Jaakob V. Gore  
Katie Gormley  
Kelly Granat & Susan Boland  
Allyson Green  
Colin Green  
Sandra Greer  
Maggie & Jim Griesing  
Peter G. & Gayle K. Grimm  
Stephen K. & Janet McCarthy Grimm  
The Grossman Family Foundation  
Guilford Fund  
Greenwich Hospital  
Haffenreffer Family Fund  
Mary Lynn Halland & John Benninger  
III  
Jane Gade Halliwell Fund  
Estate of Frances M. Hansson  
Elizabeth S. Harleman  
David T. Harrington  
Mrs. James Hoban Harris  
Megan S. Harris  
Mike & Sally Harris  
Myrna Gould-Harrison & Edward  
E. Harris  
William B. & Anne Harrison  
Kristy & Robert L. Harteveldt  
H. Darrell & Robin Harvey  
The Hastings Foundation, Inc.  
Estate of Dorothea Havighorst  
Barry C. & Lilian Hawkins  
Mary Pat Healy  
Marian & Winlow M. Heard  
Joseph T. Heavey  
Helping Hand Foundation  
Anne S. Herndon  
Judith & James H. Higby  
Duane E. & Lee Hill  
James A. & Mary Himes  
Ingrid M. Hirsch  
Michael & Hazel Hobbs  
Carole Hochman  
Fiona Hodgson  
Joseph & Sharon Hoffman  
Karen Hoffman  
Mrs. Harrison B.W. Hoffman  
Judith K. & William Holding  
Homes with Hope/IHA  
Hans Hopf  
Catalina S. & Ivan A. Horak

Horberg Industries, Inc.  
D. Gregory & Judith Anne Horrigan  
Estate of Ellen N. Hosiosky  
Barbara & Amos Hostetter  
Housatonic Community College  
Foundation  
Housing Development Fund, Inc.  
Pat & Shirley Howe  
Richard M. & Janet L. Hoyt  
HTG Investment Advisors, Inc.  
Bruce & Michele Hubler  
Lydee Conway Hummel  
Anda B. Hutchins  
Elizabeth Hutchins  
Hynes, Himmelreich, Glennon &  
Company  
Jeffrey & Andrea Immelt  
Impact Personnel, Inc.  
Matt & Sara Iorio  
Robert S. Jacobs & Delores Kuhlman  
The Jaffe Family Foundation  
Harvey & Joan James  
Estate of Gloria Marion Jankowich  
Sarah B. Jenny  
Per Johansson  
Barbara P. & Carl F. Johnson Jr.  
Bud & Lynn Johnson  
Julie M. Johnson  
Kaki Johnson  
Susie Johnson  
Mystique E. Johnston & Manuel  
E. Mejia  
Judy Jones  
Betty Beall Jordan  
JP Morgan Chase Community  
Development Group  
Nancy & Marcos A. Kail  
Diana J. Kalman  
Stanley G. Karson  
Peter H. & Joan M. Kaskell  
Henry L. & Joan L. Katz  
Keefe, Bruyette & Woods, Inc.  
Paul J. & Nancy W. Keeler  
Pat & Philip Kemp  
Victor & Gail Collins Khosla  
Jane Kiefer  
Sherri Kielland  
Mary Lee & Jack Kiernan  
Ian M. & Tracy King  
Lesley King  
Laura R. & Nathan T. Kirkpatrick  
The Kite Key Foundation  
Kathy Klingenstein & Robert Miller

Roland E. & Janet D. Klingner  
Karen Knapp  
The GB Knecht Foundation  
William R. & Audrey Knobloch  
Koegel Foundation, Inc.  
Michael P. Koskoff, Esq.  
Anahaita Kotval  
Miriam Kreigler  
Richard A. & Susan M. Krinsley  
K'tanim Preschool Congregation  
Beth El  
The Louis J. Kuriansky Foundation  
Ryan C. Lallas  
Stacey Laljee  
Alfred H. & Joan J. Lange  
John A. Lannon & Patricia C. Lannon  
Jennifer W. & Mark Lapine  
Jan Laster  
Steven Lau  
Sally & Larry Lawrence  
Amanda B. & John G. Layng  
The Lebensfeld Foundation  
Janet Lebovitz  
Walter Lee  
Katherine C. & Gary L. Leeds  
Susan S. & David G. Leibowits  
Diana Lenkowsky  
Kim & Stew Leonard  
Anne S. Leonhardt  
Brian & Naida Leslie  
Michael Lesnick & Martha McCann  
Lesnick  
Dan Levinson  
Martha Lightner  
Phillip E. & Donna M. Lint  
Naomi R. Linzer  
Littlejohn Family Foundation  
Live Nation, Inc.  
Lloyd G. Balfour Foundation  
Christine & Philip Lodewick  
Lone Pine Foundation, Inc.  
George B. & Betsy B. Longstreth  
Douglas W. Lorentz  
Meghan Lowney  
Susan Mackenzie  
Sally & Don Madden  
Elaine Madonna  
Peter B. & Laurie A. Maglathlin  
Main Street Resources Foundation,  
Inc.  
Mr. & Mrs. Robert Mainiero  
The Malkin Fund

Wesley M. Malowitz & Lauren Soloff  
Ann S. Mandel  
Susan & Stephen F. Mandel Jr.  
Marybeth & James E. Manley  
Larry & Karen B. Marchisotta  
Mark Family Fund  
Mary S. Halsey Marks  
Donald E. & Mary E. Marquardt  
Phyllis G. & Philip R. Marsilius  
Frances D. Martin  
Beth & E. Wellford Mason Jr.  
Matson Financial Advisors, Inc  
The Lorene E. Mattes "2009"  
Charitable Lead Annuity Trust  
Dee & Richard E. Mayberry Jr.  
Lauren A. & David Mazzullo  
MBI, Inc.  
Jane E. McCall  
Susan & Stuart McCalley  
Jackqueline McClean  
Hugh G. & Anne McCrory Jr.  
Melanie & Thomas H. McGlade  
Cordelia McKenna  
Sonnet & Ian McKinnon  
Pamela McKoin  
Karen & Brian McMahon  
Linda & Vincent K. McMahon  
Laurie & Peter McTeague  
Lizanne C. & John Megrue  
Joel & Ellen S. Mellis  
Tracy & Joe Merrill  
Margery Meyer  
Virginia & Juan M. Meyer  
Thomas & Emily Michaud  
Bruce & Maria Miller  
Morlee J. Miller  
Sophia Mirra  
Jack & Mary Mitchell  
William A. Monness  
Moore Family Fund  
The Edward S. Moore Family  
Foundation  
Julie Moore  
Gerald J. & Joyce Moran  
Mandi S. & A.C. Lord Morgan IV  
Barbara & John T. Morris  
Polly O'Brien Morrow  
Ben & Leanne Mortell  
Peter T. & Janet Mott  
Katharine & Kenneth Mountcastle  
Patty and David Murphy Family Fund  
of The Minneapolis Foundation

Barbara & William Murphy  
Kathy Murphy  
Marci Murphy  
John H. & Joann B. Myers  
Gregg Nardone  
Near & Far Aid Association, Inc.  
Don & Sara Nelson  
Gregory & Sue Neumann  
New Alliance Foundation  
New Haven Home Recovery  
Newman's Own Foundation, Inc.  
Albert G. & Dana Nickel  
Claudia Breslav Nielsen  
Loretta Nolan, CFP, AEP  
Ronald & Renee Noren  
Northern Trust Company  
Northstar Capital Funds, LLC  
Norwalk Hospital Foundation  
Eileen S. Oakford  
Robert W. Obrecht  
Brian O'Connor  
David & Daria O'Connor  
Robert O'Connor  
Jill & Brian Olson  
Eleanor & Henry O'Neill Family Fund  
Paula Oppenheim  
The Oristano Foundation  
Lindsay & David G. Ormsby  
Jody Osborn  
Kate & Bart David Osman  
Cathleen & Richard Ostuw  
Jean F. O'Sullivan Charitable  
Reminder Trust  
Elizabeth M. Outlaw  
The Overbrook Foundation  
Overhills Foundation  
Frances Padilla  
Jonathan Pageler & Ami-Lynn  
Bakshi  
Palisades Educational Foundation  
Incorporated  
Christine & John Palumbo  
Panwy Foundation, Inc.  
Janice Park  
Krishna Patel  
Patrick Foundation  
Patricia Patrikios  
Ronald Pelletier  
People's United Community  
Foundation  
Pepperidge Farm, Inc.  
Sherry Perlstein



# connecting to the heart:



“Women are the heart of society. When you help a woman, you’re helping her children, her extended family and her community. That’s why I love the Fund for Women and Girls—it helps girls grow up to become strong, confident women, and helps women reach their full potential. All of society benefits.”

—Mary Lee Kiernan, Greenwich

## Contributors to Foundation Funds (continued)

Mark & Karen E. Perman  
Sheila & Charles Perrin  
Elisa Persinger  
Suzanne A. Brown Peters  
William J. Peterson  
Phillips Family  
Robert & Patricia C. Phillips  
Edward G. Pinto  
The William H. Pitt Foundation, Inc.  
Margaret Platka  
Barbara F. Poll  
Marianne & Edward B. Pollak  
Paul A. & Susan P. Poniatowski  
Lori R. Price  
Katherine Prokop  
Purdue Pharma L.P.  
John & Jean S. Raben Jr.  
Allen A. Raymond  
RBS Citizens, N.A. underwritten by the Citizen Bank Foundation  
Jane & Robert Ready  
Red Mountain Entertainment, Inc.  
Redding Life Care LLC  
R. Donald & Connie Reich  
Amy Weber Reid  
Rhoda A. Reid  
Thomas V. & Marianne B. Reifenheiser  
Laurie Reighley  
Hans F. Reiss  
Relyea Zuckerberg Hanson, LLC  
Cheryl D. & Jeffrey S. Resnick  
Meredith & Eric Reuben  
Revson Charitable Trust  
Gioia F. Riccio  
Eileen & Gary Rice  
Elizabeth & John T.D. Rich  
Lunsford & Bea Richardson  
Mary Jo Riddle  
John W. & Pamela W. Ritter Jr.  
Pamela & Patricia Ritter  
Curtiss & Leslie Roach  
Daniel K. & Betty Roberts Family Foundation  
Jeanne Robertson  
Daniel D. & Doris A. Robinson  
Kristen Rodgers  
Janet Rogers  
Jeffrey & Kathy Rold  
Paul F. & Janice Roman  
Gilbert J. Rose  
Kristen Rosenbaum

Lil & Julie Rosenberg Foundation, Inc.  
Stephanie & Stuart Ross  
Susan M. Ross & Charles McCormack  
Rotary Club of Bridgeport  
Lauren Razook Roth & John M. Roth  
Charles M. & Deborah Royce  
Nan Ruben  
Gene J. & Dae Rubino  
Rebecca Ruegger  
Ruscito Family Foundation Inc.  
Brice & Laurence Russian  
Patricia Russo & John Karr  
Ruth Asset Management Co., LLC  
RYASAP  
Peter & Katherine Sachs  
Louise A. & V. Michael Salatino  
Estate of Joseph J. Santry  
Dorothy M. Savage Charitable Lead Trust  
Laura C. & Kenneth Saverin  
Deb Sawch  
Jean Scannell  
Everett M. & Sarah E. Schenk  
Paul & Susan Scheufele  
John & Sally Schlachtenhaufen  
Jane Schoenholtz  
Seabreeze Foundation  
Laura M. & A. Barrett Seaman  
Kate Sears  
Betsey & Arthur Selkowitz  
Susan Senie  
Jane Shang  
Anissa Shannon  
Carol & James Shattuck  
Megan Shattuck  
Jean & Jeffrey Shaw  
The Betty R. & Ralph Sheffer Foundation  
Ann Sheffer & Bill Scheffler  
Caroline Shen  
Marsha K. Shendell  
Robin Sherwood  
Shipman & Goodwin LLP  
Mary P. Shoemaker  
Nancy & Gilbert Simpkins  
Edith & Roy B. Simpson  
Elizabeth Sippin  
Sue M. & E W Skalandunas  
Shirley & Bill Sklar  
Heidi & Scott Smith

Nancy & Turner C. Smith  
Kathryn & Robert E. Sollmann  
Greta E. Solomon, Esq.  
Jon & Cleo Sonneborn  
Viola Spinelli  
Patricia F. & Edward V. Spurgeon  
St. Vincent's Medical Center  
Wendy Stahl  
Stamford Hospital Foundation  
Lauren Stein  
Amy Meyercord Stevens  
Kerry Y. & Jed W. Stevens  
Jayme Stevenson  
Chad Stewart  
Russell P. & Pearl R. Stockman  
Patricia L. & Hudson G. Stoddard  
Sally & Charles Stone  
Lisa G. & Scott Stuart  
Catharine S. & Jeffrey C. Sturgess  
Laura & Paul L. Sturz  
Charlotte & John Suhler  
David J. Sullivan III & Dr. Gioia J. Riccio  
Kevin J. & Edith V. Sullivan  
Hugh B. & Jeanne A. Sweeny Jr.  
Eileen Swerdlack  
Theodora L. Taggart  
The Tauck Foundation  
Tauck World Discovery  
Julie Taylor  
Lois Taylor  
Adele & Conrad Teitell  
Shelley A. Terry  
Melissa M. & Todd S. Thomson  
Ellen P. Tower  
The Ernest & Joan Trefz Foundation  
Tyler Family Fund  
United Concerts  
The United Illuminated Company  
Richard R. Uhl  
Elizabeth & Gary Unger  
John & Suni Unger  
U.S. Trust, Bank of America Private Wealth Mgmt.  
John & Cindy Vaccaro  
Peggy & Leo Van Munching  
Charles & Marianne Veth  
Mary Louise Vitelli  
Mr. & Mrs. Robert K. Vogel  
Mary S. Waldron  
Trina Waldron

Albert & Miriam V. Walker  
Hon. David M. Walker & Mary E. Walker  
Miriam Walker  
Joan M. Warburg  
Peter & Audrey Ward  
David M. & Cvijeta Warner  
Watermark Residents Association  
Wear Your Music  
Audrey Weil  
Peter A. & Deborah L. Weinberg Family Foundation  
Joyce Weiser  
Joan & Fred Weisman  
Mary Lou & Lawrence Weisman  
Curtis & Katharine Welling  
Joseph H. & Marion Wertheim  
Julie A. Whamond  
Wilmot Wheeler Foundation  
Marilyn R. White  
Linda F. & John R. Whitton III  
The Malcolm Hewitt Wiener Foundation  
Kyle Wilcox  
Juanita James & Dudley Williams  
Jane S. & Brian Williams  
Janet Williams  
Annette Wilson  
Deborah R. Wilson  
Elisa & Thomas B. Wilson  
Sandra Wilson  
Phyllis Winham  
Winokur Family Foundation, Inc.  
Richard H. & Jean Witmer Jr.  
Nancy & Greg Wolcott  
Women's Institute for Housing and Economic Development  
Karen & John Wood  
Robin & Richard Woods  
Melissa & Andrew K. Woolford  
Richard & Jill S. Woolworth Jr.  
Peter A. & Wendy Wright  
Margaret M. Wunderman  
Yardis Brothers, Inc.  
YMCA - Central Connecticut Coast  
Torrance B. York  
YWCA of Darien - Norwalk  
Donna W. Zalichin & Barry Kramer  
Jennifer & Eddy Zervigon  
John & Sara Zimmermann  
Amy & Matt Zolin  
Ellen Zumbach

## Contributors to the Fund for Women and Girls

We are pleased to recognize and thank those who generously contributed \$1,000 or more to the Fairfield County Community Foundation's Fund for Women and Girls.

The 1830 Family Foundation, Inc.  
Andrews Family Foundation  
Anonymous (3)  
Anne and Peter Ardery  
Courtney Arpano  
Richard A. & Nancy Axilrod  
David F. & Lucy Ball  
Bank of America Charitable Foundation, Inc.  
Louis F. and Virginia C. Bantle Charitable Foundation, Inc.  
Joan & Ed Barksdale  
Shelley Behrman  
Irwin Belk Educational Foundation  
Judith L. Biggs  
Bluenose Foundation  
Jane Boyle  
Bridgemill Foundation  
Charesa Brittain  
Mary Brock  
Louise Brooks  
William H. & Carol D. Browne  
Marianne F. & William B. Buchanan Jr.  
Amy & John Cholnoky  
Citibank, F.S.B.  
Rona & Jeffrey Citrin  
Vidal S. Clay  
The Steven A. and Alexandra M. Cohen Foundation, Inc.  
Mary Corson & Jonathan Sackler  
Vicki & David Craver  
Cuisle Fund  
Barbara Benton Davis Fund at FCCF

Laura Davis  
Anne Noel Dawson  
Kelly DeGulis  
Roberta D. Bowman Denning & Steven A. Denning  
James and Judith K. Dimon Foundation  
Brian & Laurie Doherty  
Amy C. & Tony Downer  
Bonny L. & Joseph R. Edwards  
FactSet Research Systems Inc.  
Marie Fauth Charitable Fund  
Betsy & Jesse Fink  
Mika & David N. Frechette  
GE Capital  
Marty & Roger Gilbert  
Beth & Arthur Golden  
Lori A. & Peter Gonye  
Katie Gormley  
Haffenreffer Family Fund  
Mrs. Harrison B.W. Hoffman  
Elizabeth Hutchins  
Hynes, Himmelmreich, Glennon & Company  
Jeffrey & Andrea Immelt  
Mystique E. Johnston & Manuel E. Mejia  
Mary Lee & Jack Kiernan  
Lesley King  
Sally & Larry Lawrence  
The Lebensfeld Foundation  
Janet Lebovitz  
Lone Pine Foundation, Inc.  
Peter B. & Laurie A. Maglathlin  
Ann S. Mandel

Susan & Stephen F. Mandel Jr.  
Mark Family Fund  
The Lorene E. Mattes "2009" Charitable Lead Annuity Trust  
Melanie & Thomas H. McGlade  
Sonnet & Ian McKinnon  
Linda & Vincent K. McMahon  
Laurie & Peter McTeague  
Lizanne C. & John Megrue  
Polly O'Brien Morrow  
Katharine & Kenneth Mountcastle  
Barbara & William Murphy  
Jean F. O'Sullivan Charitable Remainder Trust  
Jill & Brian Olson  
The Oristano Foundation  
Lindsay & David G. Ormsby  
Kate & Bart David Osman  
Cathleen & Richard Ostuw  
The Overbrook Foundation  
Panwy Foundation, Inc.  
Pepperidge Farm, Inc.  
Sheila & Charles Perrin  
Suzanne A. Brown Peters  
William J. Peterson  
Robert & Patricia C. Phillips  
Lori R. Price  
Purdue Pharma L.P.  
RBS Citizens, N.A. underwritten by the Citizen Bank Foundation  
Paul F. & Janice Roman  
Gilbert J. Rose  
Lauren Razook Roth & John M. Roth  
Peter & Katherine Sachs

Jean Scannell  
Anissa Shannon  
Jean & Jeffrey Shaw  
Shipman & Goodwin LLP  
Nancy & Gilbert Simpkins  
Edith & Roy B. Simpson  
Greta E. Solomon, Esq.  
Stamford Hospital Foundation  
Lauren Stein  
Lisa G. & Scott Stuart  
Charlotte & John Suhler  
Tyler Family Fund  
Peggy & Leo Van Munching  
Mary S. Waldron  
Joan M. Warburg  
Audrey Weil  
Peter A. & Deborah L. Weinberg Family Foundation  
Curtis & Katharine Welling  
Wilmot Wheeler Foundation  
Linda F. & John R. Whitton III  
The Malcolm Hewitt Wiener Foundation  
Kyle Wilcox  
Jane S. & Brian Williams  
Annette Wilson  
Elisa & Thomas B. Wilson  
Sandra Wilson  
Phyllis Winham  
Winokur Family Foundation, Inc.  
Richard H. & Jean Witmer Jr.

## Gifts in Memory

Donors made contributions to the Foundation to memorialize these individuals:

Del Auray Sr.  
Jennie Barillari  
Dana C. Bartlett  
Emily Brennan  
Walter "Terry" Breslav Jr. and Walter & Florence Breslav Sr.  
Colleen Britt  
Everett E. Bronski  
Helen Davidoff  
E. Gorton and Patricia H. Davis  
Belle Devendorf  
Robert Nunzio DiCroce

Leete Doty  
Andrew Gaboriault  
Norwick Goodspeed  
Ruth Greenhalgh  
Ernest R. Hammel  
Gerald A. Heffernan  
Hans Hopf  
Paul R. Hughes  
Edith Kovar  
Ameet Lamba  
Andrew Lange

Gary E. Lasko  
Barbara and Cortland Linder  
Francis M. Linley  
John Macreery  
Patricia Main  
Steve Maxwell  
Louis J. Nazzaro  
John O'Connor  
Cortright Phillips  
Janice E. Phillips Robinson  
Leah Robinson

Leonarda Scaturro  
Ella Katz Schoen  
Elizabeth Eaton Shaw  
Susan Abbott Steinagel  
Irene Sullivan Sweetkind  
Sue Randolph Switzgable  
Mary Ellen Thrasher  
John & Violet Totilas  
Mary Varaljai  
Brad Vendas  
Helen G. Wellner





# Legacy Society: Give to what matters . . .

. . . even 100 years from now.

When you remember your community, favorite cause or beloved nonprofit organization in your will, you support what you treasure forever.

You can tell us how you wish the money to be used, or leave an unrestricted gift that will tackle community problems as they emerge.

Even a modest bequest will grow, under our stewardship, into a small fortune within a few decades. At the same time, your generosity will generate ever-increasing grants to the cause or community you specify.

When you let us know that you’ve made a bequest, you’re welcomed into our Legacy Society. You’re invited to events and gatherings, and informed about Foundation initiatives and activities.

Please talk with your professional advisors and with us to find out how easy it is to leave a lasting mark on what matters to you.

We gratefully acknowledge the compassion, generosity and foresight of our Legacy Society members:

### Members

Anonymous (2)  
James R. & Kaye E. Barker  
Barbara Louise Blauvelt  
Susan Titus Glascoff  
Myrna Gould-Harrison & Edward E. Harrison  
Lori Hashizume  
William R. & Audrey Knobloch  
John Marshall Lee, CLU, RHU  
Barbara Littlefield  
Jeremy Main  
Ann S. Mandel  
Thomas R. & Doris C. McCullough  
Linda M. Molnar  
Katharine Mountcastle  
Roy G. Neumann

Janice Park  
Dr. Thomas Purcell  
Cheryl D. Reedy  
June Rosenthal  
Mary S. Waldron  
Joan & Fred Weisman  
Muriel Wilson

### Remembered

Donald C. Baldwin  
Elizabeth Wingfield Barnett  
Nancy Bassett  
Ida Davidoff  
Barbara Benton Davis  
Frances Marian Deas  
Sally Dickson

Joan T. Diedolf  
Anna K. Dziuba  
Robert B. Factor  
Mary Elizabeth Farman  
Thomas Gilmartin  
Jane Gade Halliwell  
Eduvina Hennigar  
Dorothy Herrmann  
Mary Elizabeth Hill  
Mia Holthausen  
Charlton Lyman  
Patricia Main  
Elizabeth Matthews  
Stella Margaret McHenry  
Helen Muller  
Elizabeth Bissell Northcross  
Edward Vernon Nunes

Nancy J. Pilgard  
James Powell-Tuck  
Jonathan Prince  
Philip W. & Frances Ramer  
Jean Gregory Richmond  
Leah & David E. Robinson  
William M. Saba  
Joseph J. Santry  
Dorothy M. Savage  
Ed See  
Harriet S. Sherman  
Edmund C. Spencer  
Ruth Sternbach  
Mary Varaljai  
Edward Warren

### Why Katharine Mountcastle Left a Gift in Her Will to Help Women and Girls

“My father taught me that women have to be able to take care of themselves,” said Katharine Mountcastle of New Canaan. “Women need to be well educated and financially independent” he’d say. “Don’t depend on a husband.”

Katie, who celebrates 50 years of marriage this year, made a gift in her will to the Foundation’s Fund for Women and Girls, which she has supported for years.

### In Her Own Words

“Financial independence for women is the key to everything. It frees them from depending on anybody. As women learn this, their children will learn it too. It will become established in the family thinking.

The Fund for Women and Girls is very well managed, and I’m impressed with the Foundation. This is the only organization in my will for philanthropic purposes.

I just turned 80. When you make out a will in your 50s, it’s hard to predict what will be needed decades later. Women’s issues are still in the forefront and probably will be for a long time.”



“It’s important to us, since we have made our home here, to give back to the community.” ”

—Eric and Sasha Vincent, Greenwich

# Funds of the Foundation

Every grant the Foundation makes comes from a gift made by someone like you.

Many donors have established charitable gift funds with us. They chose the name for their fund and its purpose.

Some prefer that their charitable giving takes place during their lifetimes. Others want their giving to endure for generations. The following are funds established at the Foundation, listed by fund type:

### Donor, Family & Corporate Advised Funds

These funds make it easy to actively participate in your charitable giving. You recommend grants from the fund you established to any qualifying public charity in the U.S., and we handle all of the paperwork and reporting. You can access our knowledge and philanthropic expertise for guidance about community issues and local nonprofits. You can give anonymously, and you can name advisors and successor advisors.

Advancement of Norwalk Fund  
Anonymous (2)  
Delbert L. Aury, Sr. Fund  
Back to You Fund  
Anthony Ball Memorial Fund  
Lucy and David Ball Family Fund  
Bannow-Noren Fund  
James R. and Kaye E. Barker Fund  
Barksdale Family Fund  
John P. and Nancy J. Bassett Fund  
Louise Baum, Eastern Bag & Paper Co., Inc. Fund  
Beard Family Fund  
Jane M. & Edwin A. Bescherer Fund  
Judith L. Biggs Fund  
James P. and Elinor Upton Biggs Fund  
Bisset Family Fund  
Bluenose Fund  
Richard P. & Barbara A. Bodine Fund  
Bosworth Fund  
Daniel Brennan, Sr. Fund  
The Colleen Doyle Britt Education Fund\*  
James and Margot Butler Family Fund  
Captain Morgan First Mate Fund\*

Octavio & Marianela Choy Fund  
Thomas C. Clark Fund  
Clarkson Family Fund  
Mildred (Aunt Mimi) Cohn Fund  
Como & Nicholson Fund  
Hugh and Eleanor Curran Memorial Fund  
Daffodil Fund  
Dalluge-May Family Fund  
Barbara Benton Davis Fund  
Delany Family Fund  
Bern Dibner Gift Fund  
Doherty Family Fund  
Donald J. Donahue Family Advisory Fund  
Benjamin and Frances Doto Family Fund  
George and Mary Dunbar Family Fund  
Henry B. duPont, III Advise and Consult Fund  
Fath Family Charitable Fund  
Ferguson Fund  
Betsy and Jesse Fink Fund  
Flaherty Family Fund  
Douglas and Olivia Floren Fund  
Forester Community Education Fund  
Irwin E. and Micheline Friedman Fund  
Joseph P. Ganim Foundation Fund  
Garavel Family Fund  
Gately Fund  
Leonard Geller Memorial Fund  
Jacob E. and Judith A. Goldman Fund  
Goloff-Spector Memorial Fund  
Goodspeed Fund  
Colin and Eileen Green Fund  
Joshua Greenberg Memorial Fund  
Grossman Family Fund\*  
Jane Gade Halliwell Fund  
Peter Hanson Fund  
Mike and Sally Harris Fund  
Percy, Edna, and Edward E. Harrison Fund  
Thomas C. and Mary Ann Hays Fund  
Winlow and Marian Heard Family Fund  
The Heidenreich Family Fund  
Hellogood Fund  
Hopf Family Fund  
Dr. Ellen Hosiosky Fund\*

Pat and Shirley Howe Fund  
Louis Joseloff Fund  
Peter H. and Joan M. Kaskell Fund  
Henry L. and Joan L. Katz Fund  
Keeper of the Hearth Fund  
John A. Klein Leadership Fund  
Knobloch Fund  
Julie Kovar Fund  
Indiana B. Langston Fund  
Anne S. Leonhardt Fund  
Barbara A. Leonhardt Fund  
Melissa Anne Leonhardt Fund  
John A. Leslie Fund  
Dan Levinson Charitable Fund\*  
Sol and Rebeka Lieberman Fund  
Light Fund  
Phillip E. and Donna M. Lint Fund  
Mickey Lione Sr. Memorial Fund  
Littlefield Fund  
Tom Liu Memorial Fund  
Lockhart Jennings Family Fund  
Longstreth-Pullman Family Fund  
Laura Lustig Fund  
Mandel Family Fund  
Stephen F. and Ann S. Mandel Fund  
Bonnie and Gene Markowski Family Fund  
Philip R. Marsilius Fund  
The Massad Family Fund  
McCullough-Wilkinson Families Fund  
McDonald-Wright Family Fund\*  
Peter and Barbara McSpadden Fund  
Mellis Family Fund  
Christopher T. Miller Fund  
Stephanie and David Mixer Fund  
Moran Family Fund  
Gilbert C. & Rosemary F. Mott Fund  
Gregory and Sue Neumann Fund  
Nevas Family Fund  
Paul Newman Fund  
Melissa Nickel Memorial Fund  
Charles F. & Anne Meckes Niemeth Foundation Fund  
Norgren/Mahon Family Fund  
Edward Vernon and Grace M. Nunes Fund  
  
Ostuw/Leather Family Fund  
The Outreach Fund\*  
Graham Overbrook Fund

Norman K. Parsells Rotary Memorial Fund  
Perrin Family Fund  
Pollak Family Fund  
Frank J. Riccio, M.D. Fund  
Betsy and Jack Rich Legacy Fund  
Ridgefield Community Foundation Fund  
David E. & Leah D. Robinson Fund  
Rockledge Fund  
Gil & Anne Rose Family Fund  
Anthony J. and Martha F. Ruscito Fund  
Safe Harbor Fund\*  
Dorothy and Frank L. Savage Family Fund  
Harold L. Schine Fund  
Rosamond Stephenson Shannon Fund  
Richard and Vivienne Silver Charitable Fund  
Skaarup Trust Fund  
Samuel and Esther Rachel Sobel Fund  
Theodore and Mariadina Steiber Memorial Fund  
Sternheim-Gardner Family Fund  
Stiassni Family Fund  
Suhler Family Fund  
Sullivan Family Fund  
Tauck Fund  
E.C.R. Teitell Fund  
Turtle Insurance Policy  
The Udell Family Fund  
Vacheron Family Fund  
Venman & Co. LLC Fund  
The Eric and Sasha Vincent Family Fund\*  
Clarence C. Walker Fund  
Weintraub Family Fund  
Fred & Joan Weisman Fund  
Wellborn Family Fund  
Wiehl Fund  
Joanne Woodward Fund  
The Zac and Amanda Zeitlin Family Fund\*  
Marie and John Zimmermann Fund

### Donor, Family & Corporate Advised Funds with Grant Focus

Auxiliary of Park City Hospital Endowment Fund  
Theodore H. and Margaret S. Beard Excellence in Teaching Award



# connecting to the heart:

## Funds of the Foundation (continued)

Bluefish Foundation Fund  
Bordman-Beardsley Fund  
BRAD Fund  
The Jessica Lee Brett Memorial Fund  
Bridgeport Public Housing Resident Support Fund  
Banyan Tree Fund of the Leo & Ida Davidoff Family  
Eye Care for the Underprivileged Fund  
Food Bank of Fairfield County, Inc. Fund  
Milton H. and Isabelle V. Friedberg Fund  
Heidmar Fund  
The Higher Ground Fund\*  
Lester Johnson Memorial Fund  
Brenda H. Kaplan Music Fund  
Kimball Cancer Cure Fund  
Mathew Koskob Memorial Fund  
Ruth I. Krauss Fund Early Childhood Development  
Ladysmith Fund for Women's Health  
The Steve Maxwell Fund for Teaching ESL  
Millstone Farm Charitable Fund  
Olga Fund  
Fund for Pete's Sake  
Lil and Julie Rosenberg Foundation Inc. Fund  
Stephen J. and Madelyn M. Santa Environmental Fund  
Jonathan M. Todd Accounting and Finance Higher Learning Fund  
The Truglia Thumbelina Fund  
Hilda Tooher-Corcoran Charitable Fund  
Upton Family Child Care Fund  
Florence and Bill Vermeulen Fund  
Yankee Doodle Fund For Music

\*Established FY11

### Field of Interest Funds

Your contribution to a field of interest fund is pooled with gifts from other like-minded contributors to collectively support your favorite Fairfield County cause or issue. You can give to any existing field of interest fund or establish a new fund. The Foundation makes grants in perpetuity to nonprofits that serve your field of interest.

#### Arts & Culture

Marian Anderson Award Fund  
Arts for Youth Fund  
Bridgeport Arts, Entertainment and Recreation Fund  
Charles Ettl Fund  
Sarah Wheeler Frassinelli Arts Fund

#### Children, Youth & Families

Bridgeport Energy Campership Fund  
Bridgeport Energy South End Fund  
Anna K. Dziuba and Eleanor K. Borcz Fund for Children  
Fairfield County Fund for Women and Girls  
Fairfield County Woman-BF Goodrich Childcare Scholarship Fund  
Mia S. Holthausen Fund  
Edward Mck Holly Fund  
Jean Gregory Richmond Fund  
Ridgefield Community Foundation Fund for Youth  
Ridgefield Youth Leadership Fund  
Treasure Chest Fund  
Westport Sunrise Rotary Young Voices Fund

#### Community Development, Urban Affairs

Alvord Award Fund  
Bridgeport Community Response Fund  
Arthur and Gladys Lunin Humanitarian Award Fund

Janice Park Social Justice Fund  
Stamcag Fund  
Herbert B. West Award Fund

#### Community Leadership

The Fund For Great Leadership\*

#### Education

Fairfield County Fund for Academic Excellence  
Fairfield County Fund for New Americans  
Sandra Alpert Nathan Memorial Fund for Children with Learning Disabilities  
Rabbi Harry Nelson Memorial Fund  
Norwalk Fund for Excellence in Public Education

#### Environment

Fairfield County Fund for the Environment

#### Health & Human Services

Fairfield County Fund for Health and Wellness  
Interfaith Council Fund for Respite Care  
Peter & Rose Levinsky Memorial Fund  
Arthur and Gladys Lunin Fund  
Stella Margaret McHenry Fund  
Interfaith Council-Virginia Schroeder Fund  
Sight Handicapped Fund  
Louis and Ruth Sternbach Fund For People with Disabilities  
Barbara J. Stockman Memorial Fund  
Timothy Fund  
Ginny Yurch Memorial Fund  
Strengthening Nonprofits  
Fairfield County Center for Nonprofit Excellence Fund  
Financial Management Assistance Fund

### Discretionary Funds

These funds allow you to ensure that your charitable giving is addressing the most pressing needs in Fairfield County's cities, towns and region, even as those needs change over time. The Foundation depends on discretionary funds to address high-priority issues, support initiatives that tackle community and regional problems, and help make the communities of Fairfield County healthy, vibrant and supportive to all.

#### For Countywide Grantmaking

Elizabeth Wingfield Barnett Fund  
Carr-Earle Fund  
Fairfield County Community Foundation Board Designated Grant Fund  
Fairfield County Endowment Fund  
Fairfield County High Priority Grant Fund  
Impact Fund  
Memory Fund  
Sheila and Charles Perrin Fund\*  
Nancy J. Pilgard Fund  
Edmund C. Spencer Fund

#### Community-Specific

##### Bethel

Greater Danbury Endowment Fund

##### Bridgeport

Bridgeport Rotary Club Memorial  
Greater Bridgeport Community Impact Fund

Carl B. & Marian C. Adolphson Memorial Fund  
Earle G. & Betty M. Anderson Fund  
John M. Berkowitz Fund  
David H. & Theresa L. Bresky Fund  
William & Margaret Buckens Fund



“Founded by thirteen professional women of color in 1947, Les Treize helps make college possible for youth from Bridgeport. The Foundation’s staff and its financial stewardship of our funds allow us to focus on the joy of helping students excel without having to worry about the asset management and details.”

— Geraldine Johnson and Cynthia Maignan, Bridgeport

Philip H. & Cecelia K. Burdett Fund  
R. Ward Chapman Fund  
Arthur Clifford Fund  
Albert L. Coles Memorial Fund  
Leete P. and Marjorie S. Doty Fund  
Robert B. Factor Fund  
Nancy Flint Fund  
Jeanne C. Gerber Memorial Fund  
Murray R. Glass Fund  
Grabau Family Fund  
John E. and Clare M. Hampford Fund  
Edward E. Harrison Endowment Fund  
Edward and Myrna Harrison Fund  
J. Walker Hill Fund  
Zalmon S. & Ethel P. Hirsch Memorial Fund  
Michael and Ida Hoffman Family Fund  
Emil & Mali Kriegler Memorial Fund  
A. George Lindquist Fund  
M. & F. Foundation Advise Fund  
Maddever-Harrison Fund  
Ann Adams Mandeville Fund  
Masonic Family Fund  
N.M.K.M. Fund #2  
Herbert and Margaret Renert Fund  
Willard H. Sahloff Fund  
Norman Schaff, Jr. Memorial Fund  
Schwerdtle Family Fund  
Frederick B. Silliman Memorial Fund  
William S. Simpson Fund  
Ralph & Marian Washburn Sprague Fund  
Anne W. Stokes Fund  
Bernard H. Trager Memorial Fund  
Bradford Newman Warner Fund

Miriam and Elizabeth Kriegler Memorial Fund  
Gota M. Norell Fund  
Raymond J. and Veronica O'Connor Fund  
Julia C. Palmer Fund  
Remington Products Inc. Fund  
Zarrilli Family Fund

Greater Danbury Endowment Fund (See the Ridgefield Community Foundation Fund under Donor Advised Funds)

Shelton  
Greater Bridgeport Community Impact Fund

Miriam and Elizabeth Kriegler Memorial Fund  
Gota M. Norell Fund  
Julia C. Palmer Fund  
Remington Products Inc. Fund

Brookfield  
Greater Danbury Endowment Fund

Danbury  
Greater Danbury Endowment Fund

Darien  
Five Town Endowment Fund

#### Easton

Greater Bridgeport Community Impact Fund  
Miriam and Elizabeth Kriegler Memorial Fund  
Gota M. Norell Fund  
Julia C. Palmer Fund  
Remington Products Inc. Fund

#### Fairfield

Greater Bridgeport Community Impact Fund  
Miriam and Elizabeth Kriegler Memorial Fund  
Gota M. Norell Fund  
Julia C. Palmer Fund  
Remington Products Inc. Fund

#### Greenwich

Greenwich Endowment Fund

#### Monroe

Greater Bridgeport Community Impact Fund  
Miriam and Elizabeth Kriegler Memorial Fund  
Gota M. Norell Fund  
Julia C. Palmer Fund  
Remington Products Inc. Fund

#### New Fairfield

Greater Danbury Endowment Fund  
New Fairfield Community Fund

#### Newtown

Greater Danbury Endowment Fund

#### Norwalk

Five Town Endowment Fund  
Elizabeth Bissell Northcross Fund  
Ramer Fund

#### Redding

Greater Danbury Endowment Fund

#### Ridgefield

Greater Danbury Endowment Fund (See the Ridgefield Community Foundation Fund under Donor Advised Funds)

#### Shelton

Greater Bridgeport Community Impact Fund  
Miriam and Elizabeth Kriegler Memorial Fund  
Gota M. Norell Fund  
Julia C. Palmer Fund  
Remington Products Inc. Fund

Sherman  
Greater Danbury Endowment Fund

#### Southbury

Southbury Community Trust Fund

#### Stamford

Stamford Endowment Fund

#### Stratford

Miriam and Elizabeth Kriegler Memorial Fund  
Gota M. Norell Fund  
Raymond J. and Veronica O'Connor Fund  
Julia C. Palmer Fund  
Remington Products Inc. Fund

#### Trumbull

Greater Bridgeport Community Impact Fund  
Percy C.K. & Edna Morgan Harrison Fund  
Trumbull Community Trust Fund

#### Weston

Five Town Endowment Fund

#### Westport

Five Town Endowment Fund  
Elizabeth Bissell Northcross Fund

#### Wilton

Five Town Endowment Fund

### Designated Funds

A designated fund is ideal when you want to support a specific nonprofit organization in perpetuity. You may name one or more organizations to receive annual grants from your fund. If any of your designated organizations dissolves or changes its purpose, the Foundation ensures your original charitable objectives are continued.

3030 Park Grants-in-Aid Fund  
R & E Aiello Fund  
Ann's Fund  
Aaron S. Avery Fund  
Baldwin Fund  
Edward F. Bodine Fund  
Bridgeport Learn Not To Burn  
Bridgeport Public Education Endowment Fund  
Bridgeport Rotary Club Endowment Fund

William and Philip Carlson Fund  
Fund for the Center for Global Studies  
Charlton Trust Fund  
Fund for Connecticut's 9/11 Living Memorial at Sherwood Island  
Sally Dickson Fund  
Richard O. Dietrich Fund  
ETRA Health Fund  
Gellatly Family Fund  
A Gift for Bridgeport Children  
Girl Scout Campership Endowment  
Sam M. and Pauline Golden Fund  
Christian I. & Hilma A. Gravesen Memorial Fund  
Greenwich Board of Education Fund  
Anastasia P. and Peter S. Hardy Fund  
Percy C.K. & Edna Morgan Harrison Fund  
Hawley Memorial Trumbull Library Fund  
Charles M. Herbert Barnum Festival  
Seymour I. Hollander Fund  
Invest in Fairfield County Fund\*\*  
Sanford D. Katz Fund  
Robert G. & Jean D. Lee Fund  
Byron S. Lindley Memorial Fund  
Lord Fund  
Arthur and Gladys Lunin Funds to benefit:

Ahlbin Center  
American Cancer Society  
American Health Assistance Foundation  
American Joint Jewish Distribution Committee  
American ORT  
Anti Defamation League of B'Nai Brith  
Arthritis Association  
Heritage Institution of Ellis Island  
HIAS  
Jerusalem Foundation  
Jewish Community Center  
Jewish Federation of Greater Bridgeport  
Juvenile Diabetes Foundation  
Kennedy Center, Inc.  
Kids in Crisis

Arthur and Gladys Lunin Youth Funds to benefit:  
Congregation B'Nai Israel  
Jewish Community Center  
Stephen Lyman/Greenwich Workshop  
Wilderness Fund

Marjorie and Mabel Fund  
Rocio Garces Martinez Fund  
Robert and Sophia Mitchell Memorial Fund  
William H. Moffitt, IV Cultural Arts Fund  
Edward J. Morgan Fund  
June & Rachel Muhs Fund  
Leo Nevas Memorial Fund established by the Newman's Own Foundation  
Norwalk Senior Center Community Lunch Fund  
Norman King & Laura Eales Parsells Fund  
Phillips/Lansdale Fund  
Elizabeth M. Pfriem Fund  
Dr. Charles E. Reed Fund  
Amy Louise Rich Memorial Fund  
Kay and Ed See Fund  
Jeff Shoup Memorial Fund  
Theodore B. Smart Fund  
Stratford Jaycees Community Fund  
Weston Lacrosse Club-Paul Scheufele Endowment Fund  
Thomas Berry Willson Memorial Fund  
W.I.N-W.I.N Fund

\*\*Includes contributions from funds established by Elizabeth Farman, Russell Frost III, Ralph Sheffer, and Ruth and Albert Sims and gifts from the Perrin Family Foundation, Edgar See and Constance Scanley

### Organization Endowment Funds

A nonprofit can establish an organization endowment fund to create a stable financial future. When an organization establishes a fund it becomes part of the Foundation's investment pool, and benefits from robust investment diversification and economies of scale. The fund is stewarded for the long-term needs of the organization with oversight by the Foundation's investment committee and board of directors. The organizations' donors are assured that assets are





# Greetings from Jessica Barragan, freshman at Cornell University

Jessica Barragan, 17, is the twenty-third student to receive a four-year Magnus Wahlstrom Leadership Award scholarship. She is a freshman at Cornell University.

Jessica graduated from Stratford High School with a 4.06 GPA and was the 2010-2011 Valedictorian. She was captain of the school swim team, vice president of the student council, active in numerous school groups, and volunteered locally and in Ecuador.

Jessica's mother, originally from Ecuador, raised her two children on her own. She often worked four jobs to support her family.

Here's Jessica's report after her first week at Cornell University:

**Cornell is literally my dream school. I am most eager to learn from the most intelligent and renowned professors, be inspired by my peers, and get involved. In my first two days of classes, I can already tell I'm going to absorb so much from my professors.**

**Right now, I have not declared a major. I can see myself double majoring in psychology and political science with a minor in international relations! I can't wait to see what the future has in store for me, but I know that it is up to me to make my goals come true. I intend to have a career that makes me happy.**

**The idea of giving back and making a difference has always been stressed my entire life. I was raised with the idea that if you can help, you should. I know what it's like to struggle, and I know that I have the power to lend a hand.**

**Last year, I read in the Stratford Star that the Fairfield County Community Foundation was offering scholarships. After reading the description of the Magnus Wahlstrom scholarship, I thought there was no way I could get it. Only one person out of all the seniors in the eight neighboring towns would win.**

**My guidance counselor encouraged me to apply. It was one of the best decisions I've ever made.**

**When I was told that I was the winner, I screamed, then cried. I called my mom and grandma, and they were in tears too.**

**This scholarship gives me and my family security knowing that I will have sufficient funds to pay my way through college. This award has given me a seat in the Cornell University Class of 2015.**

The annual Magnus Wahlstrom Leadership Award provides students from Greater Bridgeport with four years of generous college assistance for tuition, room and board, textbooks and supplies.

The scholarship fund was established in 1990 to honor Magnus Wahlstrom, a founder of Bridgeport Machines, Inc. Mr. Wahlstrom left his native Sweden in 1923, settled in Bridgeport, and achieved success by inventing a high-speed drilling machine and co-founding Bridgeport Machines, Inc.

## Funds of the Foundation (continued)

held separately from its operating fund. The Foundation handles all administrative responsibilities, including regulatory reporting, ensuring compliance and freeing the organization to pursue its charitable mission.

- Alpha Community Service YMCA Fund
- Anonymous
- Barnum Festival Fund
- The Beth El Cemetery Association Endowment Fund\*
- Bridgeport Rotary Community Service Endowment Fund
- Greater Bridgeport Symphony Endowment Fund
- Camp Hi Rock Endowment Fund
- The Jane Norgren CLC Fund for Children
- Dr. Robert B. Cooper Fund
- Council of Churches Community Endowment Fund
- The Domus Fund
- Pat Hart Scholarship Endowment Fund/MACH Endowment Fund
- Wilda Morgan Hayes Fund
- George T. Hewlett Fund
- Mercy Learning Center Fund
- Norwalk Symphony Endowment Fund
- Person to Person Reserve Fund
- Person to Person Endowment Fund
- Ridgefield Community Center Endowment Fund
- School Volunteer Association of Bridgeport-Alan E. Gustafson Memorial
- United Way Endowment Fund
- United Way of Coastal Fairfield County Endowment Ettlinger Fund
- VNA Corporations, Inc.-VNS of CT Hospice Free Support Fund
- Y.M.C.A. Endowment Funds

\*Established FY11

### Scholarship Funds

These funds support the educational advancement of students based on criteria of your choice. Scholarships often memorialize a loved one or honor a special person.

- Maurice W. Anderson Memorial Scholarship Fund
- Charlotte Aquino Nursing Scholarship Fund
- Aspblom-Graham Nursing Scholarship Fund
- Ernest J. Badillo Scholarship Fund
- Elizabeth Bigelow Ballard Fund
- Barquin-Bullard-Thompson ABCD Scholarship Fund
- Nancy E. Barrelle Memorial Scholarship Fund
- Arthur C. Bass Memorial Fund/Les Treize IV
- Nancy J. Bassett Oncology Scholarship Fund
- John P. Bassett Scholarship Fund
- Florence Batchelder Scholarship Fund of Class of CHS '31
- Edward R. Bernstein Memorial Scholarship Fund
- Bethany Congregational Church Scholarship
- Richard P. Bodine, Sr. Scholarship
- Walter Breslav, Jr. Scholarship Fund
- Brooklawn Country Club Caddie Scholarship Fund
- Robert W. Brown Scholarship Fund
- Cecelia K. Burdett/V.N.S. of CT, Inc. Scholarship Fund
- Wilson R. Burns Scholarship Fund
- May Camp & Webster Upson Walker Scholarship Fund
- Thomas E. Carroll Fund
- Chiota Family Scholarship Fund
- Christopher Chute Memorial Sportsman's Award Fund
- Raymond E. Clafin Memorial Scholarship Fund
- Megan Cobbledick & Jason Kern Fund
- The Paul Corwel Fund
- Edward J. Crotty Scholarship Fund
- Leona Bedient Crouchley and Charles D. Crouchley, Jr. Scholarship Fund
- Mario D'Addario Scholarship Fund
- Charles A. and Eleanor Naylor Dana Scholarship Fund
- DeBlasio/Christopher Scholarship Fund
- Richard DiSalvo Scholarship Fund
- Pastor Shearon Dudley Memorial Scholarship Fund
- Ulysses J. Dunne & Ulysses J. Dunne, Jr. Scholarship Fund
- Edward A. Dworken Memorial Foundation, Inc.
- Dworken Family Fund
- Dr. Frank G. and Edith B. Elliott Scholarship Fund
- Nicholas & Anne Nagy Fabian Scholarship Fund
- Fairfield High School Scholarship Foundation
- Joseph R. Farkas Sr., Engineering Scholarship Fund
- Victor M. Ferrante, Sr. Memorial Fund
- F.H.S. Class of '41 Fund
- The Marion and Joseph Fullin Scholarship Fund
- St. Gabriel School Scholarship/Financial Aid Fund
- Thomas J. Gardella Memorial Scholarship Fund
- Phyllis S. Garrison Scholarship Fund
- GBAF Scholarship Fund
- June Goodman Scholarship Fund
- Greater Bridgeport Bar Association Scholarship Fund
- Peter Hanson Memorial Award for Humanity
- Peter Hanson Social Justice Scholarship Fund
- William L. Hawkins Scholarship Fund
- Edward C. Hawley Scholarship Fund
- Health Related Studies Scholarship
- Housing Authority of the City of Bridgeport Scholarship Fund I
- Housing Authority of the City of Bridgeport Scholarship Fund II
- I Have a Dream of Norwalk, Inc. Scholarship Fund
- Olga and Dimitri Jankowich Fund
- Eugene and Betty Jones Engineering Scholarship for Minorities
- Kindergarten to College Collaboration Scholarship Fund
- Edward R. Kasperek Memorial Fund
- Agnes W. and Ernest W. Kaulbach Fund
- Julia Keefe Scholarship Fund
- Jeff Keith Scholarship Fund
- The Andrew E. Lange Memorial Science Scholarship Fund
- Mickey Lione Jr. Scholarship Fund
- Mickey Lione Jr. Scholarship at Trinity Catholic High School Fund
- Irving Loeb Kornblut Award
- Dorothy Weitzner Kornblut Scholarship Fund
- L'Ambiance Scholarship Fund
- LA DANZA Scholarship Fund
- Leonhardt Scholars Program Fund
- Les Treize Scholarship Fund I
- Les Treize Scholarship Fund II
- Les Treize Scholarship Fund III
- Bruce G. Lockhart Scholarship Fund
- Arthur Lunin Learn A Trade Fund
- Maccalla Family Trust Les Treize Fund
- Bertram and Sally MacMannis Scholarship Fund
- Margret McDonald and Lucy Blood Memorial Scholarship Fund
- Ralph McIntosh, Sr. Memorial Scholarship Fund
- Frank J. McKee Scholarship Fund
- Meadow Ridge Scholarship Fund
- Amanda Martin Meloy Career Choices Scholarship Fund
- Charles J. Merritt, Jr. & Virginia B. Merritt Fund

- Peg and Paul Mortell Scholarship Fund
- Theodor Muller Scholarship Fund
- Jack and Roselyn Goloff Nowitz Musical Scholarship Fund
- Frederick W. Nowlan Fund
- Eliza Oliver Memorial Scholarship Fund\*
- Helen F. Nowlan Trust Fund
- Oristano Foundation Fund
- Christine Palombi Scholarship Fund
- P.C.H. Medical Staff Scholarship Fund
- E. Cortright & Nancy Phillips Scholarship Fund
- Julia Peyton Phillips Scholarship Fund
- Edward Pickerstein Memorial Scholarship Fund
- Caesar Pina Fund
- George E. Pipkin, Jr. Scholarship
- Helen Redding Scholarship Fund
- Marcy Sallick Scholarship Fund
- Kay and Louis Samotus Scholarship
- Marion Sanford Scholarship Fund
- Senator ALJ Scanzillo Scholarship Fund\*
- Richard K. Schmidt Aquarion Science Scholarship Fund
- Schofield-Blauvelt Scholarship Fund
- Sumner Simpson Scholarship Fund
- William E. Smith Scholarship Fund
- Sonneborn Scholarship Fund
- Spanish Merchants Association Scholarship Fund
- Ralph B. and Charlotte G. Sperry Fund
- Stamford High School Class of 1951 Scholarship Fund
- William E. Stratford Memorial Fund, Boys' Club & Girls' Club of Bridgeport, Inc
- Margaret F. Taylor Scholarship Fund
- Karen Telickey Scholarship Fund
- J. Richard Tiano Memorial Scholarship Fund
- James E. Tisdale Memorial Scholarship Fund
- Jettie Tisdale Scholarship Fund
- John T. and Violet Totilas Memorial Scholarship Fund
- Ernest and Joan Trefz Scholarship Fund
- Helen Varaljai Memorial Scholarship Fund
- Leroy Vaughn Scholarship Fund
- Lt. Robert W. Vogel, USN Memorial Scholarship Fund
- Magnus Wahlstrom Leadership Award Fund
- WHHS Class of 1948 Award Fund
- William Wolper School and/or Community Service Award Fund
- Emanuel Zimmer Scholarship Fund
- Hopetown Scholarship Fund
- Charles W. Jensen III, D.M.D. Memorial Scholarship Fund
- Allan Kitchel Jr. Memorial Fund
- Lyman/Reynolds Fund
- Elizabeth Matthews Memorial Scholarship Fund
- Nancy J. Michaud Fund
- Brett M. Miller Memorial Scholarship Fund
- Martha Moxley Memorial Scholarship Fund
- Wataru John Narita Memorial Fund
- Osgood Lichty Scholarship Fund
- Sunny Hill Children's Center Fund
- Michelle Yee Memorial Scholarship Fund
- Matthew Yee Scholarship Fund

- James E. Tisdale Memorial Scholarship Fund
- Jettie Tisdale Scholarship Fund
- John T. and Violet Totilas Memorial Scholarship Fund
- Ernest and Joan Trefz Scholarship Fund
- Helen Varaljai Memorial Scholarship Fund
- Leroy Vaughn Scholarship Fund
- Lt. Robert W. Vogel, USN Memorial Scholarship Fund
- Magnus Wahlstrom Leadership Award Fund
- WHHS Class of 1948 Award Fund
- William Wolper School and/or Community Service Award Fund
- Emanuel Zimmer Scholarship Fund

\*Established FY11

### Greenwich Scholarship Association

For scholarships available to Greenwich students, the Foundation works with the Greenwich Scholarship Association. Volunteers gather, review and process applications, then award scholarships to graduating students in Greenwich. The GSA selects recipients for scholarships from the following funds:

- Jane C. Bausman Memorial Scholarship Fund
- Justin Scott Brown Memorial Scholarship Fund
- Susannah Chase Memorial Fund
- Tod Clonan Scholarship Fund
- Michael Jon Greenberg Memorial Fund
- Dr. & Mrs. William Hennigar Scholarship Fund

- Hopetown Scholarship Fund
- Charles W. Jensen III, D.M.D. Memorial Scholarship Fund
- Allan Kitchel Jr. Memorial Fund
- Lyman/Reynolds Fund
- Elizabeth Matthews Memorial Scholarship Fund
- Nancy J. Michaud Fund
- Brett M. Miller Memorial Scholarship Fund
- Martha Moxley Memorial Scholarship Fund
- Wataru John Narita Memorial Fund
- Osgood Lichty Scholarship Fund
- Sunny Hill Children's Center Fund
- Michelle Yee Memorial Scholarship Fund
- Matthew Yee Scholarship Fund

### Greenwich Scholarship Association Board of Directors

- Eryn Ament Bingle
- Anne Bourne
- Judy Chapman
- Allison Coleman
- William Dylewsky
- Lee Fletcher
- Terri Haidinger
- Marie Hertzog
- Barbara Hindman
- Catherine Holden
- Allan Jay
- Rob Janelli
- Diane Keleher
- Cindy Lindemeyer
- Jennifer Lynch
- Jennifer D. Port
- Ally Verdi Roach
- Ann Robb
- Winston Robinson
- Katherine Sanford
- Adrianne Singer
- George Sorenson
- Geoffrey Thaw
- John Vecchiolla
- Dora Williams

- Linda Woods
- Chris Zadik
- Donna Zeale

### Scholarship Review Committees

Hundreds of students throughout Fairfield County apply for college scholarships held at the Fairfield County Community Foundation. Every application is reviewed, scored and discussed by members of scholarship committees. The Foundation appreciates the work of these generous volunteers:

#### Greater Bridgeport Area Scholarship Committee

- Carrie Allen
- Elisabeth Breslav
- Barbara Buxton
- Joan Cummings
- Stella Dennis
- Kimberly "Kim" Tenn Ford
- Kate Kelly
- Beth McDonald
- Brinda Pola
- Gail Robinson
- Doris Schwarz
- Sue Thommen
- Louise Uchaczyk
- Patricia White
- Edna Wilson
- Barbara Young

#### Meadow Ridge Scholarship Committee

- Ina Atkinson
- Robert Halverstadt
- Judith Hamer
- Anne Jacques
- Rex W. Thrasher



Anna was stuck in a homeless shelter because she couldn't afford a refrigerator and a stove. Those appliances were required before she could move into affordable senior housing. Thanks to a loan from the Norwalk Senior Center and its Senior Housing Assistance Fund supported by the Foundation, Anna bought the appliances and is thriving in her own home.

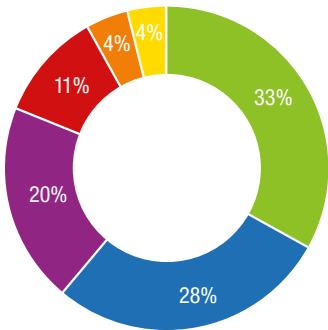


When your home poses a serious health risk to your children, where do you turn? Over 85 percent of Bridgeport's houses were built before 1980, when lead paint was common. Delroy Campbell turned to Bridgeport Neighborhood Trust. Its Lead-Free Families contractor services helps remove toxic paint to make homes safe.

Discretionary Grants

When you give to a discretionary fund, you entrust the Foundation to award grants where they are most needed.

We gratefully acknowledge the generous grant from the Frederick H. Leonhardt Fund in the New York Community Trust, which significantly enhances our discretionary grantmaking. We are indebted to the generous support of Anne S. Leonhardt.



**\$2.2 million in Grants from Discretionary Funds**

Economic Opportunity*	\$ 725,000
Education and Youth Development	\$ 625,000
Health and Human Services	\$ 443,000
Arts and Culture	\$ 246,000
Environment	\$ 86,000
Strengthening Nonprofits	\$ 69,000

\* Includes \$275,000 in grants from the Foundation's Fund for Women and Girls

We focus grants from discretionary funds on six priority areas that affect the quality of life for all in Fairfield County: Economic Opportunity, Education and Youth Development, Health and Human Services, Arts and Culture, the Environment, and Strengthening Local Nonprofits.

Grants are awarded through a competitive process. Each application is reviewed by staff and our program committees. All grants are approved by the Foundation's board of directors. Nonprofits that receive grants submit reports on progress, problems and results.

Many compassionate people include a gift to our discretionary funds as a part of their total charitable giving. You can contribute to any discretionary fund at the Foundation with a gift of cash, securities, a retirement account, life insurance, or a bequest. Please see pages 24-25 for a complete list of discretionary funds.

The following grants from discretionary funds were made in fiscal 2011, thanks to visionary people like you.

Economic Opportunity  
Total: \$725,100

Includes \$275,000 in grants from the Fund for Women and Girls; see page 35.

The Foundation's goals for these grants include increasing and preserving the supply of affordable housing, providing job skills training and helping immigrants learn English.

**Bridgeport Neighborhood Trust, Bridgeport . . . . . \$5,000**  
To support efficiencies in financial management

**Catholic Charities of Fairfield County, Danbury. . . . . \$20,000**  
To provide operating support for the Family Loan Program in Danbury

**Connecticut Association of Human Services, Hartford. . . . . \$10,000**  
To support the Earn Benefits Funding Collaborative. This statewide initiative trains workforce development providers to use a nationally recognized software program (Earn

Benefits) that enrolls low-income residents in publicly funded work supports.

**FSW, Inc., Bridgeport . . . . . \$30,000**  
To support its financial education program

**Grantmakers Concerned with Immigrants and Refugees, Sebastopol, CA . . . . . \$1,000**  
To support the mission of this national affinity group for grantmakers

**Greater Bridgeport Community Enterprises, Bridgeport . . . . . \$20,000**  
To support a new position focused on developing green jobs in Bridgeport

**Greater Bridgeport Community Enterprises, Bridgeport . . . . . \$5,000**  
To support efficiencies in financial management

**Greater New England Minority Supplier Development Council, Hamden . . . . . \$500**  
To support its mission to increase procurement opportunities between corporations and certified minority-owned businesses.

**Housatonic Community College Foundation, Bridgeport . . \$15,000**  
To support the You Can Do It Program for male students of color at the college

**Housing Development Fund, Stamford . . . . . \$20,000**  
To support its First Time Homebuyer Education Program in Fairfield County

**Housing Development Fund, Bridgeport . . . . . \$10,000**  
To support the Bridgeport office operations

**Homes with Hope, Westport . . . . . \$10,000**  
To support the women's transitional housing program

**Local Initiatives Support Corporation (LISC), Hartford . . \$200,000**  
To provide a leadership grant for the Fairfield County Collaborative Fund for Affordable Housing. The Fund provides operating support and technical assistance to nonprofit housing developers building affordable housing in Fairfield County

**Norwalk Community College Foundation, Norwalk. . . . . \$15,000**  
To support the ESL Bridge To Credit Program that helps English as a Second Language students in the non-credit division transition to the ESL credit division at Norwalk Community College

**Norwalk Senior Center, Norwalk . . . . . \$6,100**  
To support the Norwalk Senior Housing Assistance Fund, providing interest-free loans to seniors to secure or remain in affordable housing

**One Region Funders' Collaborative, c/o New York Community Trust. . . . . \$25,000**  
To support the Foundation's participation in the One Region Funders' Collaborative, which supports smart growth in the tri-state region

**Operation Fuel, Glastonbury . . . . . \$15,000**  
To support the administration of fuel banks in Fairfield County

**Southwestern Connecticut Agency on Aging, Bridgeport. . . \$20,000**  
To support the Senior Housing Assistance Fund Program in Bridgeport, providing interest-free loans to seniors to secure or remain in affordable housing

**Stamford Partnership, Stamford . . . . . \$2,500**  
To support Reinventing Stamford

**Stamford Partnership, Stamford . . . . . \$20,000**  
To support a new development position

**Education and Youth Development  
Total: \$509,689**  
The primary goals for these grants include reducing the achievement gap between low-income and upper-income children, and improving the quality and affordability of after-school and youth development programs.

**Boys and Girls Club of Greenwich, Greenwich . . . . . \$10,000**  
To support its Summer To School Enrichment Program

**Boys and Girls Club of Stamford, Stamford. . . . . \$10,000**  
To support its summer camp program

**Bridgeport Partnership for Student Success, c/o FCCF . . \$25,000**  
To support a new communications campaign and materials

**Bridgeport Public Education Fund, Bridgeport . . . . . \$25,000**  
To support the Motivation for Academic Achievement and College Success (MAACS) Program that helps Bridgeport high school students enroll and succeed in college

**Bridgeport Public Education Fund, Bridgeport . . . . . \$3,432**  
To help five Bridgeport school leaders attend a national Education Trust conference on school improvement

**Bridgeport Public Schools, Bridgeport . . . . . \$15,000**  
To support the annual Cultural Enrichment grants program



Boys and Girls Club of Stamford summer campers learn independence, cooperation and problem solving through games, activities and sports. Camp helps children avoid summer's academic slippage and return to school with fresh knowledge and confidence. In addition, their parents can continue working during school vacation, knowing their children are receiving high-quality care.



Children learn best by doing. Stepping Stones Museum for Children's exhibits, programs and events invite hands-on exploration and creative play. Play contributes to healthy brain development and allows children to work in groups, make decisions, practice adult roles, master their world—and have *fun*.

Discretionary Grants  
(continued)

**Bridgeport YMCA, Central Connecticut Coastal YMCA, Bridgeport.** . . . . . \$17,620  
To support its summer youth program

**Bruce Museum, Greenwich.** . . . . . \$10,000  
To support its Neighborhood Collaborative, serving after school programs in Greenwich, Stamford and Norwalk

**Community Centers, Inc., Greenwich.** . . \$15,000  
To support its summer youth program

**Connecticut After School Network, Branford** . . . . . \$10,000  
To support technical assistance with Hall Neighborhood House

**Connecticut After School Network, Branford** . . . . . \$15,000  
To continue facilitating the Fairfield County After School Network, originated by the Foundation

**Connecticut After School Network, Branford** . . . . . \$6,140  
To assess the quality of five summer learning programs for low-income, Fairfield County children

**Connecticut Center for School Change, Hartford.** . . . . . \$10,250  
To support the Alumni Support Program of the 2009-10 Urban School Leaders Fellowship

**Connecticut Center for School Change, Hartford.** . . . . . \$10,000  
To support the Stamford Public Schools' New Administrators Institute 2011-2012

**Connecticut Community Boating, Bridgeport** . . . . . \$8,890  
To support its summer program

**Connecticut Council for Philanthropy, Hartford.** . . . . . \$15,000  
To support the new Early Childhood Funders Collaborative, a public-private partnership with the State of Connecticut focused on early childhood systems reform

**Dispute Settlement Center, Wilton** . . . \$10,000  
To support its conflict resolution and youth mediation programs in public high schools, including Danbury High School

**Early Care and Education Training Institute, Danbury.** . . . . . \$15,000  
To support ParentSEE, a parent leadership training program in Danbury

**Education Trust, Washington, D.C.** . . . \$1,600  
To support registration fees for Norwalk and Bridgeport Public Schools leaders to attend a national Education Trust conference on reducing the achievement gap

**Family and Children's Agency, Norwalk** . . \$25,000  
To support its after school program for Norwalk middle school youth

**George Washington Carver Center, Norwalk.** . . . . . \$30,000  
To support its after school program for middle and high school students

**Kennedy Center, Trumbull** . . . . . \$15,000  
To support its summer day camp program for children with special needs

**McGivney Community Center, Bridgeport** . . . . . \$25,000  
To support its after school and weekend youth programs

**McGivney Community Center, Bridgeport** . . . . . \$5,000  
To support efficiencies in financial management

**Norwalk Children's Foundation, Norwalk.** . . . . . \$6,667  
To support developing and facilitating a citywide out-of-school-time network in Norwalk

**Norwalk Education Foundation, Norwalk.** . . . . . \$1,600  
To support the Teacher Innovation Grants Program that offers Norwalk teachers grants for curriculum innovation projects

**Norwalk Education Foundation, Norwalk.** . . . . . \$4,000  
To support the participation of the new Norwalk Public Schools' Superintendent, Dr. Susan Marks, in the Superintendents' Network, sponsored by the Connecticut Center for School Change

**Norwalk Education Foundation, Norwalk.** . . . . . \$1,230  
To help two Norwalk school leaders attend a national Education Trust conference on school improvement

**Original Works, Bridgeport** . . . . . \$10,000  
To support its youth theater arts program

**Ralphola Taylor Community Center, Central Connecticut Coastal YMCA, Bridgeport.** . . . . . \$10,000  
To support its Safe Space Program for youth ages 11-18

**Regional YMCA of Western Connecticut, Danbury** . . . . . \$20,000  
To support summer camp scholarships at the Greenknoll branch

**RYASAP Catalyst for Community Change, Bridgeport** . . . \$15,000  
To support youth leadership training and organizing at Harding High School

**Stamford Achieves, Stamford** . . . . . \$15,000  
To support its summer tutoring program at three community centers

**Stamford Museum and Nature Center, Stamford.** . . . . . \$5,000  
To support its education programs with Stamford and Norwalk Public Schools

**SoundWaters, Stamford** . . . . . \$8,260  
To support summer camp scholarships

**Stepping Stones Museum for Children, Norwalk** . . . . . \$15,000  
To provide general operating support

**Sterling House Community Center, Stratford.** . . . . . \$10,000  
To support its youth development program

**Student Conservation Association, Regional** . . . . . \$10,000  
To support its Fairfield County summer program

**Today's Students, Tomorrow's Teachers, Bridgeport.** . . . \$20,000  
To support its Bridgeport program

**Yerwood Center, Stamford** . . . . . \$20,000  
To support an organizational assessment

**YMCA of Norwalk, Norwalk.** . . . . . \$5,000  
To support its summer camp program

Health & Human Services  
Total: \$442,900

The Foundation's goals for these grants include supporting medical, dental and mental health care for uninsured and underinsured adults and families, and improving the quality of life for residents with disabilities.

**Ability Beyond Disability, Bethel** . . . . . \$10,000  
To support its adult day program



Companionship, creative expression and learning new things keep us emotionally healthy, mentally stimulated and engaged. The Easton Senior Citizen's Center is an intellectual, educational, cultural and social center for adults of all ages, and especially for retirees, seniors and physically challenged adults.



How can young visual artists mature without seeing art in person? More than 30 photography students from Bassick High School in Bridgeport ventured to the Museum of Modern Art in New York for unforgettable inspiration. For many, it was their first trip to Manhattan and viewing original works of art.

Discretionary Grants  
(continued)

**AmeriCares Free Clinics, Inc., Bridgeport . . . . . \$20,000**  
To provide general operating support for the Bridgeport AmeriCares Free Clinic

**ARI, Inc., Stamford . . . . . \$10,000**  
To support respite care services for client families

**Bridgeport Hospital Foundation, Bridgeport . . . . . \$20,000**  
To provide general operating support for Bridgeport Child FIRST

**Child Advocates of Connecticut, Westport . . . . . \$15,000**  
To provide general operating support, as a challenge grant

**Child and Family Guidance Center, Bridgeport . . . . . \$20,000**  
To support its program for Luis Munoz Marin middle school students

**Child Guidance Center of Southern Connecticut, Stamford . . . . . \$25,000**  
To provide general operating support

**Child Guidance Center of Mid-Fairfield, Norwalk. . . . . \$20,000**  
To support its Child FIRST Program, a collaboration with Family and Children's Agency and the Norwalk Community Health Center

**Child Guidance Center of Mid-Fairfield, Norwalk. . . . . \$20,000**  
To support the Extended Day Treatment Program for youth, as a challenge grant

**Christian Community Action, Norwalk . . \$5,000**  
To support its strategic planning process

**Connecticut Council for Philanthropy, Hartford. . . . . \$6,000**  
To support a donor education collaborative focused on Connecticut's growing elderly population

**Council of Churches of Greater Bridgeport, Bridgeport . . . . . \$3,400**  
To support efficiencies in financial management

**Danbury Regional Child Advocacy Center, Danbury. . . . . \$15,000**  
To support the Family Enrichment Service Program, as a challenge grant

**Domestic Violence Crisis Center, Norwalk. . . . . \$25,000**  
To provide general operating support

**Easton Senior Citizen's Center, Easton . . \$5,000**  
To support the senior recreation program

**ElderHouse, Norwalk . . . . . \$15,000**  
To provide general operating support for its adult day center in Norwalk

**ElderHouse, Norwalk . . . . . \$5,000**  
To support efficiencies in financial management

**Exchange Club Parenting Skills Center, Stamford . . . . . \$10,000**  
To support its Hispanic Crisis Parent Aide program

**Hispanic Center of Greater Danbury, Danbury . . . . . \$15,000**  
To support its community health outreach program

**Hispanic Center of Greater Danbury, Danbury . . . . . \$3,500**  
To support efficiencies in financial management

**Interlude, Danbury . . . . . \$4,000**  
To support efficiencies in financial management

**Jewish Home for the Elderly, Fairfield . . . \$15,000**  
To support the Center for Elder Abuse Prevention

**Kennedy Center, Trumbull . . . . . \$10,000**  
To support the Alzheimer's Day Program for adults

**Lawyers for Children America, Stamford/Bridgeport . . . \$10,000**  
To support the Fairfield County program

**Liberation Programs, Stamford. . . . . \$20,000**  
To support its Families In Recovery Program

**Neighbor To Neighbor, Greenwich . . . . . \$5,000**  
To support food pantry operations

**Person To Person, Darien/Stamford . . . . . \$30,000**  
To support its new collaboration with Domus in Stamford

**Positive Directions, Westport. . . . . \$20,000**  
To support its Adolescent Substance Abuse Treatment Program

**Southwest Community Health Center, Bridgeport . . . . . \$15,000**  
To support the new dental clinic

**STAR, Inc., Norwalk. . . . . \$10,000**  
To support respite care services for client families

**Transportation Association of Greenwich, Greenwich . . . \$5,000**  
To provide general operating support, as a challenge grant

**Visiting Nurse and Hospice Care of Southwestern Connecticut, Stamford . . . . . \$15,000**  
To support the cost of caring for low-income patients at the Rosenthal Residential Hospice, as a challenge grant

**Voluntary Services for the Blind of Fairfield County, Stamford . . . . . \$6,000**  
To support volunteer recruitment and retention

**YWCA of Greenwich, Greenwich . . . . . \$10,000**  
To support its Domestic Abuse Services Program

Arts and Culture  
Total: \$245,600

Arts organizations increase a community's vibrancy, connect people through performances and displays, and bring beauty and understanding into our lives. Children who receive instruction in the arts make strides in academic achievement and social development.

This year, the Foundation's goals for Arts & Culture grants included increasing the sustainability of arts organizations and helping local arts organizations collaborate with each other.

**Backcountry Jazz, Greenwich/Bridgeport . . . . . \$10,000**  
To support the Bridgeport Youth Jazz Camp

**Barnum Museum, Bridgeport. . . . . \$40,000**  
To support the Endangered Building capital project

**Bridgeport Arts and Cultural Council, c/o Housatonic Community College Foundation . . . . . \$20,000**  
To provide general operating support

**City Lights Gallery, Bridgeport . . . . . \$10,000**  
To provide general operating support

**Connecticut Beardsley Zoo, Bridgeport . . . . . \$23,300**  
To support researching and cultivating corporate donations and private foundation grants



Earthplace's Harbor Watch/ River Watch program in Westport works to restore the biological integrity of Long Island Sound and its watershed. Local high school students interested in Environmental Science careers help test waterways all year. They learn how to collect and disseminate credible, scientific data, and how to protect fragile habitats.



Twenty million people live within a one-hour drive of Long Island Sound. For most, the Maritime Aquarium in Norwalk is the only place they can discover its mysteries and get eye-to-eye with marine creatures. It's a wonderland and classroom for all who want to protect this body of water in Connecticut's front yard.

Discretionary Grants  
(continued)

**Downtown Cabaret Theatre, Bridgeport . . \$15,000**  
To support researching and cultivating corporate donations and private foundation grants

**Greater Bridgeport Symphony, Bridgeport . . . . . \$23,300**  
To provide general operating support

**Housatonic Community College Foundation, Bridgeport . . . . . \$20,000**  
To support the print curator position at the college's Museum of Art

**Housatonic Valley Cultural Alliance, Danbury. . . . . \$15,000**  
To provide general operating support for this arts council serving Greater Danbury

**Maritime Aquarium, Norwalk . . . . . \$20,000**  
To provide general operating support

**Stamford Symphony Orchestra, Stamford . . . . . \$20,000**  
To provide general operating support

**Westport Arts Center, Westport . . . . . \$9,000**  
To support its collaboration with the Bridge Academy in Bridgeport

**Westport Country Playhouse, Westport . . \$20,000**  
To provide general operating support

**Environment  
Total: \$86,150**

One of the joys of living in Fairfield County is its beauty, yet the region's 900,000 residents disturb ecosystems and encroach on open space. The Foundation awards grants to

improve the health of Long Island Sound and its watershed, increase green space in urban settings, and promote smart growth initiatives.

**Connecticut Fund for the Environment, New Haven . . . . . \$50,000**  
To support the Bridgeport Water Resources/ Green Infrastructure Project

**EarthPlace, Westport . . . . . \$9,800**  
To support the Harbor Watch/River Watch environmental education program

**Land Trust Alliance, Washington, D.C. . . \$2,500**  
To support Fairfield County land trust attendees at the October 2010 National Land Trust Conference

**Regional Plan Association, Bridgeport . \$23,850**  
To support the Community Capacity-Building Program of the BGreen 2020 Green Living Initiative

**Strengthening Local Nonprofits  
Total: \$69,048**

Goals of these grants include increasing the efficiency and sustainability of nonprofits.

**Connecticut Association of Nonprofits, Hartford. . . . . \$20,000**  
To deliver skill-building workshops for Fairfield County nonprofits as part of the Foundation's Center for Nonprofit Excellence

**Connecticut Council for Philanthropy, Hartford. . . . . \$6,972**  
To support a collaborative community foundation focused on advocacy and public policy

**Connecticut Council for Philanthropy, Hartford. . . . . \$6,937**  
To support the Council's mission of promoting and supporting effective philanthropy for the public good in Connecticut

**Connecticut News Project, Hartford . . . . . \$1,000**  
To support www.ctmirror.org, a new website featuring coverage of Connecticut government affairs, a guide to state elected officials, and a library of documents from state agencies and other organizations

**Council on Foundations, Washington, D.C. . . . . \$11,000**  
To support its mission to provide the opportunity, leadership, and tools needed by philanthropic organizations to expand, enhance, and sustain their ability to advance the common good in the United States

**Grantmakers for Effective Organizations, Washington, D.C. . . \$575**  
To support the mission of this national affinity group for grantmakers

**Greater Danbury Nonprofit Resource Center, c/o United Way of Western Connecticut, Danbury . . . . . \$5,000**  
To provide general operating support

**Partnership for Strong Communities, Hartford. . . . . \$7,000**  
To support the Leadership Development Roundtable, providing leadership training to aspiring nonprofit executive directors in Fairfield County

**Pro Bono Partnership, White Plains, NY . . . . . \$7,500**  
To support Pro Bono Partnership's work with Fairfield County nonprofits

**University of Connecticut, Storrs . . . . . \$3,064**  
To provide scholarships for four Fairfield County nonprofit executives to attend an executive director retreat

**Fairfield County Community Foundation's Fund for Women and Girls  
Total: \$390,600**

The goals of these grants are to help low- and moderate-income women supporting dependents achieve economic security, and help girls acquire skills and confidence to overcome obstacles, create positive change in their lives and become leaders. In addition, the Fund for Women and Girls supports advocacy for wage equality and policy representation.

**Cardinal Shehan Center, Bridgeport . . . . . \$10,000**  
To help create Girlz Zone, a safe and cheerful place designed by the girls. Girls ages 8-13 meet after school to discuss and address bullying, internet safety, health concerns and other issues in their lives.

**Center for Women and Families, Bridgeport/Regional . . . \$5,000**  
To support Girl Talk for girls ages 13-17 who have been victims of (or are exposed to) domestic, dating or sexual violence. They learn survival skills, discover their strengths and gain confidence to move forward.

**Domus Foundation, Stamford . . . . . \$7,800**  
To support its Girls Circle positive role modeling workshops for middle and high school girls. In weekly sessions, girls address issues such as gangs, drug use, bullying and violent relationships, and learn to build trust and connect to community resources.

**Family & Children's Agency, Norwalk. . . . . \$20,000**  
To support Girls Challenge for middle school girls from diverse ethnicities. Girls learn about conflict resolution, healthy friendships, personal boundaries, communication tools, goal setting, stress management, personal safety, assertiveness and public speaking. They also engage in community service.

**Girls Inc., Stamford . . . . . \$10,000**  
To support Media and Me, and Media Smarts. Girls ages 6-11 attending CTE's after school program learn about media influences and how to set boundaries for using social media. They build self-esteem and are exposed to wholesome female role models.



Girls Challenge is for middle school girls who need extra guidance to get on the path to robust lives. This Family & Children's Agency's weekly, after-school program teaches girls about conflict resolution, healthy friendships, personal boundaries, communication tools, goal setting, stress management, personal safety and public speaking. They also engage in community service projects.



Discretionary Grants (continued)

**Girl Scouts of Connecticut, Regional . . . \$5,000**  
To support Girlz R.U.L.E. (Respect, Understand, Lead, Empower), an anti-bullying program for girls from second to eighth grade. They build skills to cope with harassment, threats, and cyber-bullying—and learn how to speak up, listen to others, and work in teams.

**Norwalk Community College Foundation, Regional. . . . . \$250,000**  
To fund Year 3 of the Family Economic Security Program (FESP), an initiative helping low- and moderate-wage Norwalk Community College students supporting dependents achieve economic security. The students receive coaching, mentoring and funding to help them attain college degrees and family-sustaining wages.

**Norwalk Community College Foundation, Regional . . . . . \$25,000**  
To support the Family Economic Security Program's career development financial coaching

**RYASAP, Bridgeport . . . . . \$20,000**  
To support Finding Her Voice for Greater Bridgeport girls from 10 local high schools. Girls of different ethnicities, grades, faiths and income levels come together to identify, discuss and address shared problems. They explore making healthy decisions and setting goals, and learn to initiate positive change in their relationships, schools and communities.

**RYASAP, Regional. . . . . \$11,000**  
To support Raising the Bar. Up to 30 nonprofit leaders with programs specifically for girls meet four times a year. They learn from each other and outside experts how to improve their programs and serve more girls. Participants also role play many of the activities for their girls programs, giving them a first-hand feel for the challenges today's girls face.

**Wakeman Boys & Girls Club, Bridgeport . . . . . \$6,800**  
To implement Girls Nite Out, an upbeat evening of exercise, dance and crafts to strengthen communication and bonds between middle school girls, their mothers or primary female guardians, and the broader community.

**YWCA of Greenwich, Greenwich . . . . . \$20,000**  
To support Y-Net, a dating violence prevention, leadership and advocacy program led by Greenwich High School students. Students are trained to educate other students on how to identify and prevent dating violence. They also advocate for teen anti-violence legislation.

*Each of these discretionary grants was made possible by visionary, compassionate individuals and families who made an unrestricted gift to the Foundation. Thank you for your investment in improving the quality of life in Fairfield County, and helping all have the opportunity to participate and thrive.*



How One Fund is Changing Public Housing

(Above) Stable Families helped Neijire avoid eviction and provide stability for her children.

Last year, Neijire A. and her two children faced eviction from their Bridgeport public housing apartment. She was losing hope and afraid of how she would care for her children. Sensing her despair, they began acting out. Neijire felt her life unraveling.

That's when Bridgeport Housing Authority attorney Jennifer Black referred Neijire to the Stable Families program.

"When families like Neijire's lose their subsidized housing, they double-up with relatives or move to a shelter," said Jennifer. "Neither is a stable option. Thanks to the Stable Families program, the Housing Authority can refer families like Neijire's to this local program that helps them stay in their home."

**Stable Families helps families facing eviction**  
Grants from the Bridgeport Public Housing Resident Support Fund at the Foundation support the Stable Families program. Stable Families caseworkers assess each family's needs, then work with them to develop a comprehensive plan. For example, families facing eviction get help to find work, apply for benefits and financial assistance, develop budgets, and negotiate repayment plans.

Since Stable Families' launch in late 2009, 99 percent of enrolled families have avoided eviction, gotten back on their feet and improved their lives. It's hard work and rarely straightforward.

**Multiple serious problems underlie financial instability**  
As caseworkers become more familiar with client families, they find problems like chronic disease, mental illness, learning disabilities, illiteracy and domestic violence underlie financial struggles.

The Stable Families program untangles and tackles these problems in three ways. First, it brings together its staff, the advisory committee of the Bridgeport Public Housing Resident Support Fund, program operator New Haven Home Recovery, and the Bridgeport Housing Authority to look at and beyond families' housing problems. They collaborate on cases, identify multiple services that can help families, and track progress. In addition, they look for ways to intervene months before a family faces eviction.

For Neijire, Stable Families provided a lifeline. "Thanks to my caseworker, I have a plan. I'm doing what I need to do to get my family back on track. I've got hope again, and I'm being the mother I want to be."

For more information on Bridgeport Public Housing Resident Support Fund, visit [www.fccfoundation.org](http://www.fccfoundation.org).

Foundation Grants from Donor Advised, Designated and Organization Endowment Funds

100 Black Men Foundation	American Museum of Natural History	Berkshire Taconic Community Foundation	Brooklyn Bureau of Community Service
A Better Chance of Ridgefield	American Place Theatre	Beta Theta Pi Foundation	Brooklyn Heights Montessori School
A Better Chance of Wilton	Americans for Democratic Action	Beyond Shelter	Brooklyn Law School
A Children's Brain Tumor Cure Foundation	AmeriCares Foundation, Inc. (4)	Biomedical Energy Engineering Study Group	Bruce Museum
ABCD, Inc. (2)	Amos House, Inc.	Bishop Loughlin Memorial High School	Builders Beyond Borders (2)
Ability Beyond Disability	Andrew Shaw Memorial Trust and Scout Cabin	Black Rock Garden Club (2)	Burroughs Community Center (2)
Achievement First (3)	Animal Shelter of Wood River Valley	Black Rock Little League of Bridgeport (2)	Cab Calloway Foundation
Ackerman Institute for the Family	Ann's Place, The Home of I CAN (2)	Bloomington Playwrights Project	California Heritage Museum
Adopt-A-Dog	Anti-Defamation League, Conn.	B'nai B'rith Anti-Defamation League	Camp Dudley YMCA
Aging in Place + Gallivant	Area Congregations Together, Inc.	Boathouse Foundation	Camp Fire Conservation Fund
AHALA Children's Rights Foundation	Arthritis Foundation Connecticut Chapter	Boy Scouts of America, Greenwich Council	Camp Sunshine
Ahlbin Centers for Rehabilitation Medicine (2)	Arts for Healing (2)	Boys & Girls Club of Greenwich (2)	Camp TLC/Joey Dipaolo AIDS Foundation
Albany Park Theater Project	Atlantic Salmon Federation	Breast Cancer Alliance (2)	Cancer Support Community
Alumni Fund of Smith College (2)	Atwill Memorial Chapel Association	Breast Cancer Research Foundation	Caramoor Center for Music and the Arts
Alzheimer's Association	Audubon Connecticut (2)	Bridgeport Area Youth Ministry (3)	Cardinal Sheehan Center (2)
American Cancer Society (2)	Avon Old Farms School	Bridgeport Child Advocacy Coalition (4)	Caroline House (3)
American Civil Liberties Union Foundation	Backcountry Jazz (2)	Bridgeport Hospital Foundation (6)	Carter Center
American Decorative Art 1900 Foundation	Backstretch Employee Service Team of New York, Inc.	Bridgeport Hospital School of Nursing	Catholic Charities of Fairfield County (2)
American Diabetes Association	Ballet Nouveau Colorado	Bridgeport Public Education Fund (4)	Center for Children's Advocacy, Inc.
American Friends of Winchester College	Barnum Festival, Inc.	Bridgeport Rescue Mission	Center for Environment and Population
American Health Assistance Foundation	Barnum Museum Foundation	Broadway Cares-Equity Fights Aids Inc. (2)	Center for Global Studies
American Heart Association	Bartlett Arboretum and Gardens	Brookings Institution	Center for International Environmental Justice
American Joint Jewish Distribution Committee	Bates College (2)		Center for Women and Families of Eastern Fairfield (4)
American Lung Association	Beginning with Children Foundation, Inc.		Center for Youth Leadership c/o
	Berea College		



# Foundation Grants from Donor Advised, Designated and Organization Endowment Funds (continued)



“Person-to-Person is where people turn to when they have nowhere else to go; Fairfield County Community Foundation is the place to go for financial support for an innovative idea, for advice on best nonprofit practices, and for conversations with knowledgeable staff to clarify thinking. Person-to-Person's relationship with FCCF is invaluable to our work, and the work of Fairfield County's nonprofit community.”

—Ceci Maher, Executive Director, Person-to-Person

Brien McMahon High School  
Central Connecticut Coast YMCA (9)  
Chappaqua Orchestra Association  
Child Guidance Center of Mid-Fairfield County  
Child Guidance Center of Southern Conn., Inc.  
Childcare Learning Centers, Inc. (6)  
Children's Aid Society  
Children's Cancer Fund  
Children's Hospital Foundation  
Children's Hospital Foundation at WMC  
Children's Hospital Los Angeles  
Children's Rescue Mission  
The Children's School  
Children's Tumor Foundation  
Christ Church Greenwich (2)  
Christ Church Vero Beach  
Christian Community Action  
Cingari Family Foundation  
Circle of Care for Families with Cancer  
City Harvest  
City of Hope  
City of Norwalk  
City Squash, Inc.(3)  
CityCenter, Danbury  
Classical Studies Academy  
Clean Air Cool Planet  
Coe College  
Colgate University (2)  
College of New Rochelle  
Columbia University College of Physicians & Surgeons  
Community Foundation for Greater New Haven  
Community Foundation for Nantucket  
Community Fund of Darien (9)  
Community Theatre Foundation  
Comprehensive Development, Inc.  
Concert Artists Guild  
Congregation Beth El (3)  
Congregation B'nai Israel  
Congregation B'nai Torah  
Conn. Aeronautical Historical Association DBA N.E. Air Museum  
Conn. Against Gun Violence Education Fund  
Conn. Appleseed Center for Law and Justice  
Conn. Association for Children and Adults w Learning Disabilities  
Conn. Association for Human Services  
Conn. Association for the Education of Young Children  
Conn. Ballet  
Conn. Beardsley Zoo  
Conn. Challenge (2)  
Conn. Coalition for Achievement Now (ConnCAN) (3)  
Conn. Community Foundation (2)  
Conn. Farmland Trust (2)  
Conn. Food Bank, Inc. (16)  
Conn. Freemasons Foundation, Inc.  
Conn. Fund for the Environment (3)  
Conn. Junior Republic (2)  
Conn. Public Broadcasting, Inc.(2)  
Conn. Veterans Legal Center  
Conn. Yankee Council, Inc., Boy Scouts of America (3)

Coordinating Committee for Children in Crisis  
Cos Cob Volunteer Fire Department  
The Cottage In Darien  
Council of Churches of Greater Bridgeport (4)  
Courage to Speak Foundation, Inc. (2)  
Covenant House  
Dana Farber Cancer Institute  
Danbury Children First  
Danbury Grassroots Tennis, Inc.  
Danbury Public Schools  
Danbury Regional Child Advocacy Center, Inc.(3)  
Darien Board of Education-DHS Band Fundraiser  
Darien Community Association  
Darien EMS-Post 53 (4)  
Darien Fire Department Foundation  
Darien Land Trust  
Darien Library (4)  
Darien Technology & Community Foundation, Inc.  
Dartmouth College (7)  
Dartmouth College, Friends of Dartmouth Library  
Dartmouth College, Friends of Dartmouth Squash  
Dartmouth Hillel  
DC Volunteer Lawyers Project  
DEBRA of America, Inc., Dysrophic Epidermolysis Bullosa Research  
Designated Drivers Foundation  
Developments in Literacy, Inc.  
Diocese of Atlanta  
Diocese of Bridgeport (2)  
Discovery Museum  
Dispute Settlement Center (3)  
Doctors Without Borders (3)  
Domus Foundation (10)  
Donors Choose (2)  
Duke Ellington Center for the Arts  
Duke University Annual Fund  
E.F. Schumacher Society  
Eagle Hill School (2)  
Earth Force, Inc.  
Earthjustice  
East Coast Assistance Dogs  
Easter Seals Goodwill Industries, Inc.(2)  
Easton Community Center  
Edgartown Library Foundation  
Elton John Aids Foundation  
Environmental Advocates of New York  
Environmental Defense Fund (3)  
Epilepsy Therapy Project  
Equal Justice Initiative of Alabama  
Fabretto Children's Foundation  
Face Forward, Inc.  
Facing History and Ourselves  
Fairfield College Preparatory School (2)  
Fairfield Foundation for Education  
Fairfield Museum & History Center (3)  
Fairfield Public Library  
Fairfield University (4)  
Faith Tabernacle Missionary Baptist Church  
Family and Children's Agency (5)  
Family Centers, Inc.(9)

Family ReEntry (5)  
Feeding America  
Feeding America Tampa Bay  
Fellowship Foundation, Inc. dba International Foundation (3)  
Fellowship Place  
Film Forum, Inc. (2)  
First Descents  
First Presbyterian Church (2)  
First Tee of Connecticut  
Florida Atlantic University  
Food Allergy and Anaphylaxis Network  
Food Bank New York City  
Fordham University  
Foreign Policy Association  
Franklin County Family YMCA  
Fredonia College Foundation of SUNY  
Friends of Booker T. Washington National Monument  
Friends of Independent Schools and Better Education  
Friends of the Ferguson Library  
FSW, Inc.  
The Fund for Park Avenue  
Garden Education Center  
Gay, Lesbian and Straight Education Network  
Geo. A. Smith American Legion Post #74  
George & Raymond Frank Foundation  
George Washington Carver Center (2)  
Georgetown University  
Getabout, Inc.  
Giant Steps-Conn. School (2)  
Girl Scouts of Connecticut  
Give Back Foundation  
Global Exchange  
Goodwill Industries of Western Conn. (3)  
Grantmakers for Education  
Great Mountain Forest Corporation  
Greater Bridgeport Symphony Society (5)  
Greater Kansas City Community Foundation  
Green Village Initiative, Inc.  
Greens Farms Academy (2)  
Greenwich Academy  
Greenwich Adult Day Care  
Greenwich Alliance for Education  
Greenwich Center for Hope & Renewal  
Greenwich Country Day School (2)  
Greenwich Department of Social Services  
Greenwich Emergency Medical Services, Inc.(2)  
Greenwich Historical Society  
Greenwich Hospital (2)  
Greenwich Library (3)  
Greenwich Music Festival  
Greenwich Symphony  
Greenwich Tree Conservancy  
Gridiron Greats Assistance Fund  
GroundWork Bridgeport  
Growing Gardens  
Habitat for Humanity of Coastal Fairfield County (2)  
Habitat For Humanity of Westchester (2)

Hackers for Hope  
Harlem Children's Zone  
Harlem Educational Activities Fund, Inc. (HEAF)  
Harvard Glee Club Foundation, Inc.  
Harvard University  
Harvard University Business School (2)  
Hearing & Speech Agency of Metropolitan Baltimore  
Heifer Project International  
High Water Women Foundation  
Hillsdale College  
Historic Hudson Valley  
Hole in the Wall Gang Camp (2)  
Home and Hospice Care of Rhode Island  
Homes for the Brave/ABRI (2)  
Homes with Hope/IHA (4)  
Horizons National  
Horizons Student Enrichment Program, Greens Farms Academy (3)  
Horizons Student Enrichment Program, New Canaan Country School (2)  
HORSE of Connecticut, Inc.  
Hospice Caring, Inc.  
Hotchkiss School  
Housatonic Valley Association, Inc.  
Housing Development Fund, Inc. (2)  
Housing Works  
Hubbard House  
Human Services Council of Mid-Fairfield (2)  
Idaho Conservation League  
Inner-City Foundation for Charity & Education  
Innocence Project (2)  
Interlude, Inc.  
International Documentary Association  
International Justice Mission (4)  
International Senior Lawyers Project  
Jackie Robinson Park of Fame  
Jacob Burns Film Center  
Jacob's Pillow Dance Festival  
Japan Society of Fairfield County  
JazzReach Performing Arts & Education  
Jewish Center for Community Services (6)  
Jewish Community Center of Harrison  
Jewish Family Services  
Jewish Foundation of Greater New Haven  
Jewish Home for the Elderly of Fairfield County (2)  
JFK Medical Center Foundation  
Joel Barlow High School  
John F. Kennedy School of Government  
Junior Achievement of Western Connecticut  
Justin Cowboy Crisis Fund  
Juvenile Diabetes Research Foundation, Fairfield County Div. (3)  
Kansas University Endowment Association  
Kennedy Center (4)  
Kent Congregational Church (2)  
Kent School

Kids in Crisis (5)  
LABrynth Theater Company  
Lafayette College  
Lake Christian Ministries  
Lake Waramaug Task Force, Inc.  
Learning Community Day School  
Lee Pesky Learning Center  
Leukemia & Lymphoma Society  
Liberation Programs, Inc.(2)  
Lions Clubs Foundation of Darien Conn. Inc.  
LISC-Local Initiatives Support Corp. (3)  
Literacy Volunteers of America, Stamford/Greenwich (4)  
Lost Tree Village Charitable Foundation  
Louisiana SPCA  
Loyola Recovery Foundation  
Lutheran Social Services of New England  
M.A.C. House  
Magical Music For Life, Inc.  
Make it Better Foundation  
Make-A-Wish Foundation of Connecticut  
Marrakech, Inc  
Martha's Vineyard Hospital  
Maryknoll Sisters  
Masonic Charity Foundation of Conn. (2)  
Matthew Gaffney Foundation  
McGinney Community Center (2)  
Meals-on-Wheels of Greenwich  
Memorial Sloan-Kettering Cancer Center (5)  
Mercy Corps  
Mercy Learning Center of Bridgeport, Inc.(7)  
Merritt Parkway Conservancy (2)  
Meserve-Kunhardt Foundation  
Metropolitan Museum of Art  
Metropolitan Opera  
MFY Legal Services, Inc.  
Miami University  
Michael J. Fox Foundation for Parkinson's Research  
Middlebury College  
Millbrook School  
Morris Street Family Resource Center  
Mount Sinai Medical Center  
Museum of Modern Art  
Music for Youth, Inc.  
Nantucket Conservation Foundation  
Nantucket Cottage Hospital  
Nantucket Land Council, Inc.  
NARAL Foundation  
Nathaniel Witherell, Inc., Friends of (2)  
National Kidney Foundation  
National Mentoring Partnership  
National Trust for Scotland Foundation, USA  
Nativity School of Worcester  
Natural Resources Defense Council  
Nature Conservancy of Block Island  
Nature Conservancy, Conn.  
Near and Far Aid Association  
Neighborhood Studios of Fairfield County (9)  
Neighbor-to-Neighbor (2)  
New York Philharmonic

New 42, The New Victory Theater  
New Canaan Country School (3)  
New Covenant House of Hospitality  
New England Forestry Foundation  
New Fairfield Community Foundation (2)  
New Haven Home Recovery (2)  
New Hope Missionary Baptist Church  
New York Botanical Garden  
New York Center for Autism Research and Education, Inc.  
New York City Center, Inc.  
New York Restoration Project  
New York University School of Law (2)  
New York University Stern School of Business  
Newtown Scholarship Association  
Norma F. Pfriem Breast Care Center  
Noroton Presbyterian Church  
North End Little League  
North Stamford Congregational Church  
Northwestern University  
Norwalk Community College Foundation (8)  
Norwalk Grassroots Tennis, Inc.  
Norwalk Hospital Foundation (4)  
Norwalk Housing Foundation  
Norwalk Land Trust (2)  
Norwalk Public Schools  
Norwalk Senior Center (2)  
Norwalk Symphony Orchestra (2)  
Norwalk Youth Symphony  
Notre Dame High School (2)  
Nyack Homeless Project. Ltd. (2)  
Oblates of the Virgin Mary Mission Society of St. Mary's Parish  
Ohio Wesleyan University (2)  
One Region Funders' Collaborative  
Operation Hope  
The Orion Society  
Orphans Against AIDS, Inc.  
ORT America, Inc.  
Outward Bound (2)  
OXFAM America  
Palm Bay United Methodist Church  
Parent Project Muscular Dystrophy  
Park City Primary Care Center, Inc.  
Partners in Health (3)  
Pegasus Therapeutic Riding (3)  
Pequot Library  
Person-to-Person (12)  
Phillips Exeter Academy Alumni Fund  
Pine Manor College  
Pivot Ministries  
Planned Parenthood of Southern New England (3)  
Ponus Street Chapel & Community Association  
Port Chester Carver Center  
Potomac School  
Prep for Prep  
Princeton University  
Purchase College  
Rachel Carson Council  
Rady Children's Hospital-San Diego  
Ralphola Taylor Center Y.M.C.A.  
REACH Prep (3)  
Reach the World  
Ready for Reading

Re-Entry Ministry  
Regional Plan Association, Conn.  
The Rensselaerville Institute  
Research and Social Media Collaborative Corporation  
Reverb  
Ridgefield Community Center  
Ridgefield Operation for Animal Rescue  
Ridgefield Playhouse  
Robin Hood Foundation  
Rocky Mountain Center for Musical Arts  
Rocky Mountain Institute  
Roddenberry Foundation  
Rosenfeld Heart Foundation  
Rotary Club of Bridgeport (4)  
Rowayton Library  
Russian Children's Welfare Society, Inc.  
RYASAP (2)  
Sacred Heart Academy  
Sacred Heart University (2)  
Saint Ann's School  
Salvation Army (2)  
Salvation Army, Southern New England Division (2)  
Sandpoint Waldorf School  
Sankaty Head Foundation, Inc.  
Saul Silbert Charitable Trust/Purple Crayon Project  
Save the Children  
School of Rock  
School Volunteer Association  
Scruggs Rescue Squad  
Septima Clark Public Charter School  
SERRV International  
Shakespeare on the Sound  
Share Our Strength  
Sigma Sigma Sigma Foundation (2)  
Simmons College  
Ski and Snowboard Club Vail  
Skidmore Jazz Institute-Skidmore College  
Smith College  
Smith College Museum of Art  
Smith Mountain Lake Rotary Foundation  
Soldiers For The Truth Foundation  
Solo Foundation  
Soundkeeper, Inc.  
SoundWaters (5)  
Southeast White House  
Southern Illinois University Foundation (4)  
Southern Poverty Law Center  
Southport Congregational Church  
SquashBusters  
St Joseph High School  
St. Ann Roman Catholic Church (2)  
St. Francis School  
St. Gabriel School (2)  
St. Jerome Church  
St. Jude Children's Research Hospital  
St. Leonard Ministries  
St. Luke's Episcopal Church (3)  
St. Luke's LifeWorks (4)  
St. Luke's School  
St. Mary's Church (2)  
St. Paul's Episcopal Church (2)

St. Thomas More Roman Catholic Church  
St. Vincent's Medical Center Foundation (4)  
Stamford Adult & Continuing Education  
Stamford Center for the Arts  
Stamford Hospital Foundation (7)  
Stamford Museum & Nature Center (4)  
Stamford Partnership  
Stamford Symphony Orchestra (5)  
Stamford Youth Foundation (2)  
Stanford Fund  
Stanford University (2)  
Stanwich Congregational Church  
Staples High School Tuition Grants (6)  
Starlight Children's Foundation  
Starlight Starbright Children's Foundation  
Staying Put in New Canaan  
Sterling House  
Street Squash  
Student Conservation Association, Inc.  
Summer on the Hill, Inc.  
Sun Valley Summer Symphony  
Susan G. Komen Breast Cancer Foundation  
Susquehanna Service Dogs  
Sustainable Markets Foundation  
Swim Across America- Long Island Sound Swim  
Syracuse University, School of Human Ecology  
T&E Cares  
Taft School  
Tanglewood, Friends of  
Teach for America (7)  
TEAK Fellowship  
Technoserve  
Telemachus Foundation Inc.  
Temple Israel  
Thirteen/WNET (2)  
Thomas Merton Center  
Tibet Fund  
Tiny Miracles Foundation  
Town of Wilton Veterans Memorial Green  
The Trevor Project  
Trinity Church, Greenwich (4)  
Trinity Episcopal Church (Nichols) (2)  
Trinity Episcopal Church (Southport)  
Trinity University Press  
Trumbull Library  
Turn of River Presbyterian Church  
UJA Federation of Eastern Fairfield County  
Union College  
United Church of Rowayton (2)  
United Congregational Church  
United Way of Coastal Fairfield County (4)  
United Way of Greenwich (4)  
United Way of Western Conn.  
University of Albany Foundation  
University of Bridgeport (2)  
University of Connecticut Law School Foundation  
Unquowa School  
Uplifting Athletes, Inc. (2)

Urban League of Southern Connecticut  
Vacamas Programs for Youth  
Vail Symposium  
Vassar College  
Vermont Land Trust  
Village Initiative Project, Inc.  
Visiting Nurse & Hospice Care of Southwestern Conn.  
Visiting Nurse & Hospice of Fairfield County (2)  
Visiting Nurse Services of Connecticut, Inc.  
Vital Voices Global Partnership, Inc.  
Volunteer Center of Southwestern Fairfield County  
W.I.N-W.I.N Foundation, Inc.  
Wakeman Boys & Girls Club (2)  
Water.org  
The Watermark at 3030 Park (4)  
Waterside School (2)  
Waveny Care Network  
West Point Fund, Association of Graduates  
Westport Arts Center, Inc.  
Westport Field of Dreams  
Westport Historical Society  
Westport Public Library (3)  
Westshore Montessori School  
Whitby School (2)  
Whitney Museum of American Art  
Wholesome Wave  
WICC Holiday Fund  
Wilderness Society  
Williamstown Film Festival, Inc. (2)  
Wilton Commons  
Wilton Land Conservation Trust  
Wilton Library Association (3)  
Wittenberg University  
WNYC New York Public Radio  
Women for Women International  
Women's Business Development Council (6)  
Woodcock Nature Center  
Woodrow Wilson National Fellowship Foundation  
Woodway Scholarship Fund  
Wooster School  
The WorkPlace  
World Vision-Women of Vision  
World Vision-Women of Vision-Fairfield County  
Yale School of Architecture Alumni Fund  
Yale University  
Yale University School of Medicine, Women's Health Research  
Yankee Institute for Public Policy  
YMCA Bridgeport-Central Conn. Coast YMCA (3)  
YMCA of Wilton (2)  
Yosemite Association  
Young Mariners Foundation (2)  
YWCA of Greenwich (3)





## Governance and Committees

Members of the board, seated, L-R: Barry Hawkins, Lindsay Reimers, Edgar Barksdale, Andrea Gartner, David Sullivan, Vicki Craver, Bruce Hubler, Bernicestine Bailey.

Standing, L-R: Mary-Jane Foster, Mary Lee Kiernan, Sheila Perrin, Lizanne Megrue, Phyllis Marsilius, John Chiota, Katharine Welling, Steven Wolff

Not pictured: Michael Funck, Robert Graham, James Himes, Joseph Hoffman, Anahaita Kotval, Peter Mott, Ronald Noren, Linda Whitton

### Board of Directors

Barry C. Hawkins, Bridgeport, Chair  
Bernicestine M. Bailey, Westport  
Edgar W. Barksdale Jr., Darien  
John P. Chiota, Trumbull  
Vicki Craver, Riverside  
Amy C. Downer, Stamford  
Mary-Jane Foster, Bridgeport  
W. Michael Funck, Riverside  
Andrea Gartner, Danbury  
Robert C. Graham Jr., Stamford  
James A. Himes, Cos Cob  
Joseph Hoffman, Trumbull  
Bruce A. Hubler, Bridgeport  
Mary Lee Kiernan, Greenwich  
Anahaita Kotval, Tarrytown, NY  
Phyllis G. Marsilius, Bridgeport  
Lizanne C. Megrue, Norwalk  
Peter T. Mott, Fairfield  
Ronald B. Noren, Easton  
Sheila A. Perrin, Ridgefield  
Lindsay Reimers, Greenwich  
David J. Sullivan III, Westport  
Katharine Welling, Wilton  
Linda F. Whitton, Wilton  
Steven A. Wolff, Fairfield

### Emeritus Directors

Edwin A. Bescherer, Jr, Wilton  
Wilmot L. Harris, Jr, Greenwich  
Edward E. Harrison, Aventura, FL  
Harold Howe, South Kent  
Ann S. Mandel, Darien  
Janice Park, Bridgeport  
Ruth Sims, Skillman, NJ

### Officers and Executive Committee

Barry C. Hawkins, Chair  
Sheila A. Perrin, Vice Chair  
David J. Sullivan III, Treasurer  
John P. Chiota, Secretary  
Edgar W. Barksdale Jr.  
Mary-Jane Foster  
W. Michael Funck  
Katharine Welling  
Linda F. Whitton

### Arts & Culture Committee

Steven A. Wolff, Chair  
Karen F. Royce  
Ann E. Sheffer  
Eileen Wiseman

### Audit Committee

Hon. John P. Chiota, Chair  
Edwin A. Bescherer Jr.  
Ralph L. DePanfilis, CPA  
David J. Sullivan III

### Center for Nonprofit Excellence Advisory Committee

Sheila A. Perrin, Chair  
Marti Etter  
Kiki Karpen  
Ceci Maher  
Phillip McKain  
Robert Neiman  
Ronald B. Noren, Esq.  
Novelette Peterkin  
Sherry Perlstein  
Maurice Segall

### Development and Communications Committee

W. Michael Funck, Chair  
Andrea Gartner  
Joseph Hoffman  
Bruce A. Hubler  
Lizanne C. Megrue  
Ronald B. Noren  
Katharine Welling  
Steven A. Wolff

### Economic Opportunity/Health and Human Services Committee

Mary-Jane Foster, Chair  
Joseph Hoffman  
Bruce A. Hubler  
Anahaita Kotval  
Joseph J. McGee  
Ed Rodriguez  
Ileana Velazquez

### Education and Youth Development Committee

Linda F. Whitton, Chair  
Amy C. Downer  
Mary Lee Kiernan  
Phyllis G. Marsilius  
Laurie McTeague  
Lizanne C. Megrue  
Eileen Swerdlick

### Environment Committee

Robert C. Graham Jr., Chair  
Christine Cook  
Ann Elliman  
Christine Lodewick

### Governance Committee

Sheila A. Perrin, Chair  
Bernicestine M. Bailey  
Vicki Craver  
Robert C. Graham Jr.  
Bruce A. Hubler  
Lindsay Reimers

### Investment Committee

Edgar W. Barksdale Jr., Chair  
Edwin A. Bescherer Jr.  
Christopher D. Brown  
Charles W.K. Haberstroh  
Amy J. Gillis  
Barry C. Hawkins, Esq.  
Allan V. Jay III, CFP  
William R. Knobloch  
Arnold D. Pearlstone  
James D. Seymour  
David J. Sullivan III  
John A. Vaccaro

### Legal Committee

Barry C. Hawkins, Esq., Chair  
Hon. John P. Chiota  
Wilmot L. Harris, Jr., Esq.



## Committees

(continued)

(Top) Hundreds of supporters contributed over \$510,000 at the annual luncheon for the Fund for Women and Girls. Their generosity benefits women and girls in Fairfield County.

(Bottom Left and Center) Surprise speaker Karine Henriquez, a participant in the Fund's Family Economic Security Program at Norwalk Community College, and keynote speaker Soledad O'Brien, CNN anchor and correspondent, inspired over 700 guests at the 12th annual luncheon for the Fund for Women and Girls.

(Bottom Right, L-R) Luncheon co-chairs Mike Frechette and Janet Lebovitz, Fund for Women and Girls director Suzanne Brown Peters, Fund co-chairs Katharine Welling and Vicki Craver.

### Fund for Women and Girls

#### Steering Committee

Vicki Craver and Katharine Welling, Co-Chairs, Fund for Women and Girls  
Mika Frechette and Janet Lebovitz, Co-Chairs, Luncheon Committee  
Mary-Jane Foster  
Mary Lee Kiernan  
Lindsay Ormsby  
Lindsay Reimers  
Kyle Wilcox

#### Program Committee

Cheri Amado  
Patricia T. Brown  
Frosty Friedman  
Beth Golden  
Lindsay Ormsby  
Jody Osborn  
Kate Osman  
Eileen Rice  
Kyle Wilcox

#### Luncheon Committee

Courtney Arpano  
Brooke B. Ashforth  
Mary Brock  
Louise Brooks  
Marianne F. Buchanan  
Sharlene Cameron  
Amy Cholnoky  
Susan Cotter  
Vicki Craver  
Andrea Cross  
Amy C. Downer  
Bonny Edwards

Betsy Fink  
Mary-Jane Foster  
Mika W. Frechette  
Elisabeth Golden  
Jane Boyle Hentemann  
Elizabeth Hutchins  
Andrea Immelt  
Kaki Johnson  
Cordy Gould Kelly  
Mary Lee Kiernan  
Lesley King  
Sally Lawrence  
Janet Lebovitz  
Ann S. Mandel  
Susan Mandel  
Melanie S. McGlade  
Laurie McTeague  
Lizanne C. Megrue  
Kathy Murphy  
Dana Nickel  
Carolyn O'Brien  
Lindsay Ormsby  
Lynne Pascualano  
Marianne Pollak  
Lindsay Reimers  
Carol Shattuck  
Jeanie Shaw  
Ann E. Sheffer  
Nancy Simpkins  
Lauren Stein  
Amy Stevens  
Sally Stone  
Lisa G. Stuart  
Mary S. Waldron  
Audrey Weil  
Katharine Welling  
Valeria Wells

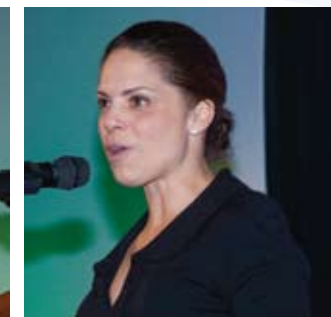
Linda F. Whitton  
Kyle Wilcox  
Jane S. Williams  
Elisa Wilson  
Louise York

### Advisory Council

Lucy Ball  
Kaye E. Barker  
Edgar W. Barksdale Jr.  
Nancy C. Brown  
Andrea K. Cross  
Marty Gilbert  
Tracy T. Goodnow  
Julie Graham  
Wilmot Harris Jr., Esq.  
Anne S. Leonhardt  
Barbara Leonhardt  
Ann S. Mandel  
Susan Mandel  
Lizanne Megrue  
Lynne Pascualano  
Sheila Perrin  
Marianne Pollak  
Katherine Sachs  
Ann Sheffer  
Sally Stone  
Charlotte T. Suhler  
Ellen P. Tower  
Peggy Van Munching  
Mary S. Waldron

### Honorary Members

Katharine Mountcastle  
Joan M. Warburg







“The Foundation has been a great resource for my clients who know their basic philanthropic goals but have trouble deciding where to make specific gifts to carry out their vision. The Foundation’s Field of Interest funds relieves them of the burden of searching out effective organizations and programs, and gives them the peace of mind that their good intentions will be carried out.”

—*Jevera Kaye Hennessey, Kaye and Hennessey, LLC, Greenwich*

Advisory Council and Professional Advisors Council

**The Advisory Council** helps the Foundation accomplish its mission to promote philanthropy to build and sustain a vital and prosperous community where all have the opportunity to participate and thrive. Members live and work in cities and towns throughout the county, and have been selected for their community knowledge and strong interest in our mission.

- W. Michael Funck, Chair, Riverside
- Thomas C. Appleby, Norwalk
- Lucy Ball, Darien
- Kaye E. Barker, Darien
- Nancy C. Brown, Greenwich
- Michael J. Critelli, Darien
- B. Cort Delany, Greenwich
- Jeff F. Erdmann III, Greenwich
- Elizabeth Fath, Fairfield
- Eric N. Ferguson, Darien
- Jesse Fink, Wilton
- Wilmot L. Harris Jr., Greenwich
- Per Heidenreich, Greenwich
- Mickey Herbert, Fairfield
- Peter Hurst, Bridgeport
- Gary A. Kraut, Greenwich
- Thomas D. Lenci Jr., Bridgeport
- Kelli List Wells, Stamford
- Peter Malkin, Greenwich
- Ann S. Mandel, Darien
- Susan Mandel, Greenwich
- Peter McSpadden, Riverside
- Jonathan Moffly, Weston
- Robert Neiman, Stamford
- Daniel K. Roberts, Stamford
- Gene J. Rubino, Stamford
- Charlotte T. Suhler, Darien

- John A. Vaccaro, Weston
- Thomas E. Vacheron, Fairfield
- Lewis J. Wallace, Danbury

**Our Professional Advisors Council** is a voluntary group from the legal and financial communities. These members help their clients engage in smart philanthropy, and help the Foundation with their wisdom, guidance and referrals.

- Peter T. Mott, Esq., Chair  
Brody Wilkinson PC
- David F. Ball  
UBS Financial Services, Inc.
- Laura Weintraub Beck, Esq.  
Cummings & Lockwood LLC
- Deborah S. Breck, Esq.  
Pullman & Comley, LLC
- Catherine M. Brennan, Esq.  
Catherine M. Brennan Attorney at Law LLC
- Paul H. Burnham, Esq.  
Rucci, Burnham, Carta & Carello, LLP
- Michael Cacace, Esq.  
Cacace, Tusch & Santagata
- Edward J. Capasse, Esq.  
Nevas, Nevas, Capasse & Gerard, LLC
- Daniel L. Daniels, Esq.  
Wiggin and Dana LLP
- Amy L. Y. Day, Esq.  
Day & Levy, LLC
- John J. Ferguson, Esq.  
Ferguson Cohen, LLP
- Carolina Fernandez  
Source Capital Group
- Richard S. Fisher, Esq.  
Cacace, Tusch & Santagata
- Richard B. Freeman, CFP  
Round Table Services LLC

- W. Michael Funck  
Hynes, Himmelreich, Glennon & Company
- Leslie E. Grodd, Esq.  
Halloran & Sage LLP
- Wilmot L. Harris Jr., Esq.  
Ivey, Barnum & O'Mara, LLC
- Gregory A. Hayes, Esq.  
Day Pitney LLP
- David R. Hermenze, Esq.  
Hermenze & Marcantonio LLC
- Ellis A. Hiltz  
Ellis A. Hiltz & Associates
- Mary E. Hoyt, CPA  
Blum Shapiro
- Michelle R. Hubbard, Esq.  
Hawthorne, Ackerly & Dorrance, LLC
- Leonard Leader, Esq.  
Wiggin and Dana LLP
- John M. Leask II CPA/ABV,CVA  
John M. Leask II CPA, LLC
- David T. Leibell, Esq.  
Wiggin and Dana LLP
- Patricia L. McDermott, CTFA  
Citi Private Bank
- Frank Moore  
UBS Financial Services, Inc.
- Loretta Nolan, CFP, AEP  
Loretta Nolan Associates, LLC
- Ronald Noren, Esq.  
Brody Wilkinson PC
- William J. Peterson  
Neuberger Berman
- Gregory T. Rogers  
RayLign Advisory LLC
- Gregory A. Saum, Esq.  
The Law Office of Gregory A. Saum LLC
- Marc A. Silverman, CPA  
Mann & Company, CPAs
- George L. Smith, Esq.  
Smith & Grant LLP
- Kevin A. Walsh, Esq.  
Whitman, Breed, Abbott & Morgan, LLC
- Carl Zuckerberg, CFP, AIF  
Relyea Zuckerberg Hanson LLC

Community Friends

Community Friends serve as our ambassadors. They provide a link between the Foundation and individual communities, and they make introductions to individuals, families and family foundations interested in local philanthropy. We thank these Community Friends.

- Susan Cooper
- Ann Elliman
- Karl Epple
- Marty Gilbert
- Susan M. Greenberg
- Leslie Grodd, Esq.
- William R. Knobloch
- Ralph A. McIntosh Jr.
- Barbara T. McKelvey
- Ellen Mellis
- David M. Nee
- Albert G. Nickel
- Gregory Perry
- Patricia C. Phillips
- Marianne Pollak
- Allen A. Raymond
- Elizabeth Rich
- Ann E. Sheffer
- Sally Stone
- Conrad Teitell, Esq.
- Joan Weisman
- Dana Welles



Community Friend Marty Gilbert joins her husband Roger at Weir Farm National Historic Site in Wilton.

Staff

After the fiscal year concluded on June 30, 2011, the Foundation bid fond farewells to Susan Ross and Mary Zwecker. We welcomed Juanita James as the Foundation's new President and CEO, and Joseph Baker as our new Vice President of Finance and Administration.

These staff members served during fiscal 2011:

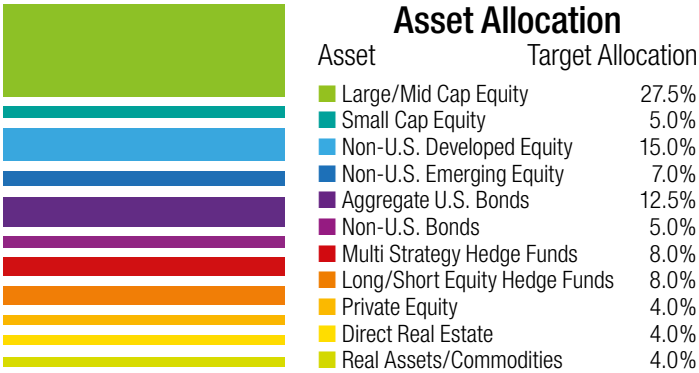
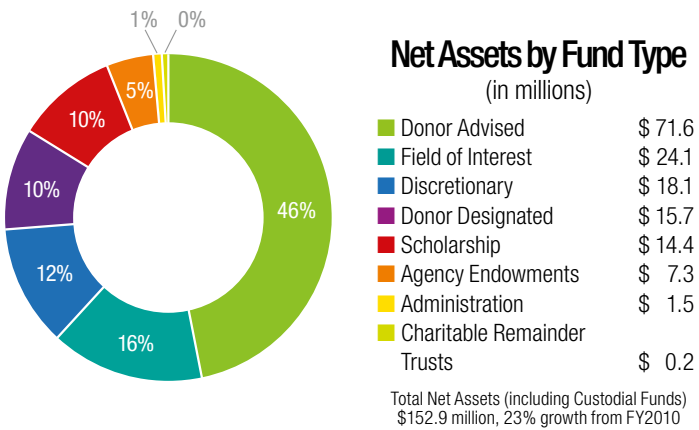
- Susan M. Ross, MEd  
President & CEO
- Dorcas T. Blue  
Program Director
- Jennifer Branstrom  
Donor Services Associate
- Karen R. Brown, MPA  
Vice President of Programs
- Sharon Jones  
Program Administrative Assistant
- Laura Mast  
Office Receptionist/Administrative Assistant
- Suzette Mede  
Finance Associate
- Morlee J. Miller  
Manager of Administration
- Elaine Mintz  
Director of the Center for Nonprofit Excellence,  
Program Director
- Sallie Mitchell  
Communications Director
- Alanna Morton  
Assistant to the CEO
- Suzanne B. Peters, MBA  
Director of the Fund for Women and Girls
- Sharon L. Reiss, MA, CFRE  
Director of Philanthropic Services
- Sonia C. Rivera  
Finance Assistant
- Madeleine G. Thal  
Donor Services Associate
- Nancy M. von Euler, MPA  
Program Director
- Jeff Yates  
Communications Manager
- Mary E. A. Zwecker, CPA, MBA  
Vice President of Finance and Administration





“The Foundation’s investment is diversified across a broad range of asset classes and investment strategies. This structure has served us well, limiting losses during negative market environments without sacrificing opportunities during favorable periods.”

—*Edgar W. Barksdale, Jr.*  
*Chair, Fairfield County Community Foundation Investment Committee*



## Fiscal 2011 Financial Highlights

Each fund established at the Foundation reflects a trust in our ability to invest resources wisely. The following is an overview of our investment philosophy, and summarized financial statements for the year ended June 30, 2011.

### Investment Committee and Investment Managers

The Investment Committee of the Foundation’s Board of Directors is responsible for determining the broad allocation of Foundation assets among various asset classes, designing the investment structure for each asset class, retaining investment managers and other professionals, and monitoring investment trends and performance.

In fiscal 2011, the Foundation’s portfolio was invested with Artio International, Aurora Offshore, Champlain Investment Partners, Colchester Global Investors, DG Capital Management, Dimensional Fund Advisors, Discovery Global Opportunities, Dodge & Cox, Forester Capital, Gryphon International, Neuberger Berman, Loomis Sayles, Metropolitan Real Estate, Protégé Partners, Siguler Guff, Silchester International Investors, Steinberg Asset Management, The Investment Fund for Foundations (TIFF), Vanguard funds, and Winton Capital Management Limited.

On a long-term basis, our portfolio has outperformed established benchmarks.

### Investment Philosophy

The Foundation seeks to safeguard assets entrusted to us, and, at the same time, generate total return for grantmaking that responds to current and changing charitable needs in the community. These criteria dictate our investment philosophy:

- Primary emphasis is placed on preservation of asset purchasing power through investment growth and total return
- Moderate growth of principal and total return is expected, consistent with maintaining safety of principal
- The Investment Committee focuses on asset allocation among equity, debt and other investment opportunities. It seeks a return in line with the Foundation’s spending policy as it relates to long-term grantmaking goals.

*For a complete set of the financial statements of the Fairfield County Community Foundation, as audited by O’Connor, Davies, Munns & Dobbins, LLP, call 203.750.3200.*

### Statement of Financial Position as of June 30, 2011 and 2010

Assets	2011	2010
Cash and cash equivalents	\$ 184,982	\$ 134,151
Contributions and other receivables	1,732,812	171,939
Investments, at fair value	152,986,624	126,011,557
Split-interest agreements	291,214	282,590
Prepaid expenses and other assets	117,242	244,724
<b>Total Assets</b>	<b>\$155,312,874</b>	<b>\$126,844,961</b>

### Liabilities and Net Assets

Liabilities	2011	2010
Grants payable	2,073,895	2,265,089
Accounts payable and other liabilities	121,167	143,755
Liability under split-interest agreements	86,263	87,186
Deferred rent payable	105,601	85,162
Agency endowments	7,346,647	5,260,178
<b>Total Liabilities</b>	<b>9,733,573</b>	<b>7,841,370</b>

Net assets	2011	2010
Unrestricted net assets	3,344,614	2,704,865
Temporarily restricted net assets	142,234,687	116,298,726
<b>Total Net Assets</b>	<b>145,579,301</b>	<b>119,003,591</b>
<b>Total Liabilities and Net Assets</b>	<b>\$155,312,874</b>	<b>\$126,844,961</b>

### Statement of Activities Years Ended June 30

Revenues	2011	2010
Contributions	\$ 17,607,353	\$ 9,009,492
Investment return, net of investment expenses	23,437,870	13,614,884
Change in value of split-interest agreements	9,547	12,709
Other income	187,315	143,141
<b>Total Revenues</b>	<b>41,242,085</b>	<b>22,780,226</b>

### Expenses

Program:	2011	2010
Grants	12,102,237	10,558,174
Grant services, research and evaluation	1,286,363	1,249,505
Donor fund development	776,951	753,557
	14,165,551	12,561,236
Supporting services:		
Management and administration	414,499	368,742
Fundraising	86,325	83,728
	500,824	452,470
<b>Total Expenses</b>	<b>14,666,375</b>	<b>13,013,706</b>
Change in net assets	26,575,710	9,766,520

### Net Assets

Beginning of year	119,003,591	109,237,071
<b>End of Year</b>	<b>\$145,579,301</b>	<b>\$119,003,591</b>





Fairfield County  
Community Foundation

383 Main Avenue, Norwalk, CT 06851

Tel: 203.750.3200 [www.fccfoundation.org](http://www.fccfoundation.org)



Confirmed in compliance with national standards for U.S. community foundations

# connecting to the heart:

## What matters to you?

What do you love about your community?

Which causes ignite great joy, inflame  
righteous anger—or break your heart?

One decision can shape the future, beginning today.

When you choose the Fairfield County Community Foundation  
to be your philanthropic partner, you gain access to expertise and  
innovation that bring about real change.

Your charitable desires are transformed into smart philanthropy.  
Your giving becomes more meaningful, produces the most good  
from each dollar, and is more effective at helping those in need.

And you make a difference  
in your own backyard and beyond.