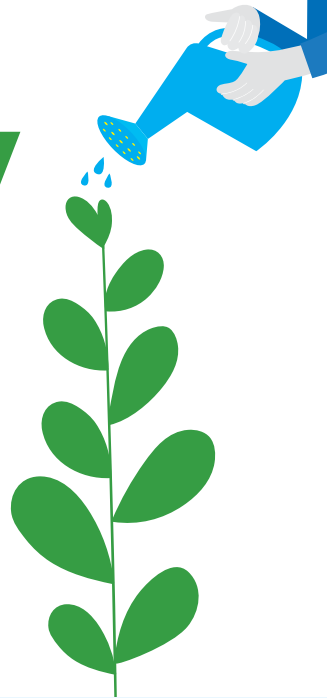


# The Future Society



## Forward Thinking: Creating Your Philanthropic Legacy

While every donor has the power to create positive change in their communities, some go even further. They see the possibility to sow seeds of lasting progress beyond the boundaries of their lifetimes. These visionary partners are at the heart of The Future Society at Fairfield County's Community Foundation.

When you include the Community Foundation in your estate plan—through your will, trust, or other assets—you affirm your enduring dedication to the wellbeing of your community as your gift provides grants to nonprofits working to boldly create solutions for generations to come.

### Joining the Future Society may be the most meaningful decision you'll ever make.

When you become part of this special group of generous individuals who include the Community Foundation in their estate plan, you'll join our Future Society members in experiencing:



#### The Joy of a Lasting Legacy

Discover the profound satisfaction of creating lasting support for causes you care about most.



#### A Network for Good

Connect with like-minded people who share your commitment to building a brighter future.



#### Collective Impact

Your generous gift will be amplified by contributions from other donors, maximizing your impact.



#### Flexibility and Control

Modify your giving plan as your circumstances or philanthropic goals evolve.



### The Community Foundation Advantage

The Community Foundation has deep roots and expertise in Fairfield County. We have an intimate knowledge of the region's unique challenges and the bold solutions to address them. We provide our donor partners access to this expertise and a large network of organizations and leaders making a difference.

Whatever your stage of life, we're here to help you create a plan that meets your philanthropic vision and financial goals. Your gifts—from wills and trusts to other assets—can support specific charities or enable the Community Foundation to meet the region's most pressing needs. No matter your age or your income, you have options to create a forever gift to your community. Importantly, your gifts grow over time, giving back to the community in meaningful ways—forever.

# Your Planned Giving Options

Partner with us to design a planned giving strategy that addresses your specific goals—both philanthropic and financial—well into the future. We can help you explore planned giving options like:



**Bequest:** By naming the Community Foundation as a beneficiary, you gift us your assets (cash, stocks, appreciated securities, or personal property) after your lifetime—in any amount or a percentage of your estate.



**Life Insurance:** When the original purpose for a life insurance policy no longer applies, you can name the Community Foundation as a beneficiary of the policy as a meaningful way to support your community.



**Retirement Assets:** When retirement assets pass to your heirs, they can be subject to estate and income taxes. As a result, many donors choose to fund their charitable giving by designating the Community Foundation as the beneficiary of their retirement accounts.



**Real Estate:** Giving real estate as a charitable contribution can create an enduring legacy, while unlocking several tax, income, and estate planning benefits.



**Charitable Lead Trust:** You transfer assets into a trust that makes payouts to the Community Foundation for a fixed number of years—while you receive tax benefits. At the end of the trust term, your designated beneficiaries receive the remainder of the trust with substantial tax savings.



**Charitable Remainder Trust:** You and/or others you designate receive annual income for life or for a fixed term, while you receive the tax benefits. Then, at the end of the income period, the trust's remaining assets pass into a permanent fund at the Community Foundation.

## Explore More



To access the full range of our planned giving options, our charitable gifts calculator, and other planned giving tools and resources, visit [FCCFLegacy.org](https://FCCFLegacy.org).



Jeremy Main, Future Society Member

*"The Community Foundation has been a resource for helping me decide where to give. The knowledge it has accumulated regarding the needs of the community in Fairfield County is impressive. The Community Foundation will continue my giving after I am no longer here — and I know it will do it well."*

## Ready to start the conversation?

Let's talk about how you can plan a gift that transcends time. Contact Sara DeRose, Director of Development & Philanthropic Services, at (203) 750-3210 or [SDeRose@FCCFoundation.org](mailto:SDeRose@FCCFoundation.org).



40 Richards Avenue | Norwalk, CT 06854 | 203.750.3200 | [FCCFoundation.org](https://FCCFoundation.org)



[FCCFoundation\\_CT](https://www.instagram.com/FCCFoundation_CT)



[FCCFoundation](https://www.facebook.com/FCCFoundation)



[Fairfield County's Community Foundation](https://www.linkedin.com/company/Fairfield-County-s-Community-Foundation)