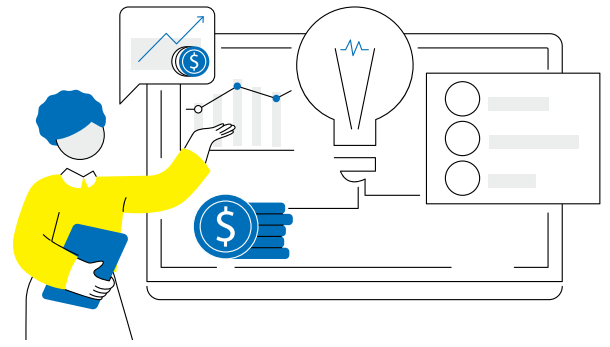


Investment Options

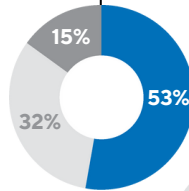


Select the investment model that best fits your philanthropic goals.

LONG-TERM OPTIONS

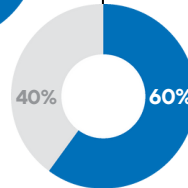
Investment Pool

This global balanced fund is the most common investment choice. Using well-researched, high-quality, and regularly monitored investments, this highly diversified, risk-adjusted portfolio seeks long-term growth which supports both current and future programmatic work and grantmaking. Money managers are selected by our Investment Committee with the assistance of a neutral investment consultant. The policy allocation is **53% Equity, 32% Alternative Investments, and 15% Fixed Income.**



Vanguard Index Fund (VBIAX)

This single-strategy investment leverages the Vanguard Balanced Index Fund Admiral Shares, a passively managed mutual fund. This option is ideal as a low-cost choice to gain exposure to stocks and bonds with a long-term investment horizon. The target policy allocation is **60% Equity and 40% Fixed Income.**



INTERMEDIATE & SHORT-TERM OPTIONS

Asset allocation for intermediate investments may vary depending on market conditions and investment horizons. The target allocation range for the intermediate-term options is **50% to 80% Equity, 42% to 12% Fixed Income, and 8% Alternative Investments.**

Non-endowed Investment Choices

The following pools are managed to match a donor's intent of immediate and sizable grantmaking, with an investment objective of moderate growth and sufficient liquidity. Using well-researched, high-quality, and regularly monitored investments, this diversified, risk-adjusted portfolio supports both current and future grantmaking. It invests in equity and fixed income assets.

Raymond James Investment Option

This diversified portfolio is made up of twelve mutual funds and ETF strategies that offer liquidity and simple market valuation. This investment is suited for a three-to-seven-year grantmaking plan, with estimated fees of 0.51%.

Intermediate Investment ESG-Aware Pool

This diversified portfolio is comprised of twelve mutual funds and ETF strategies selected to deliver ESG-driven products, liquidity, and simple market valuation. This option is well-suited for donors with a three-to-seven-year grantmaking plan, and a preference for transparency and social impact. Estimated fees for this fund are 0.60%.

Ultrashort Fixed Income Pool

This investment option invests in cash and cash equivalents to maintain liquidity similar to a traditional money market pool, offering the least amount of risk with a corresponding lower yield. This can be a desirable option if immediate or near-term grant recommendations are planned, or when used as a complementary strategy alongside other investment options.

Prefer to work with your own investment advisor?

Donors who maintain a fund with a minimum value of \$250,000 may choose to keep their own investment manager or name an external qualified advisor to manage their investments. We will work with the advisor to maintain a reasonable asset allocation, manage cash flow, and approve investments changes.