

TOGETHER WE THRIVE



Corporate Partnership Opportunities

Empowering Businesses. Strengthening Communities.

What We Offer



VISIBILITY AS A CORPORATE CITIZEN

Position your organization as a values-driven community partner, demonstrating your commitment to employees and customers alike.



TAILORED & EFFECTIVE GIVING STRATEGIES

We work closely with you to create customized charitable solutions that align with your organization's values, operational needs, and philanthropic goals.



A FLEXIBLE RANGE OF GIVING OPTIONS

Whether it's establishing a donor-advised fund, contributing non-cash assets, or creating a customized giving vehicle, we provide the right tools to support your organization's philanthropic goals.



INSIGHTS ABOUT LOCAL NOPROFITS DOING GREAT WORK

Drawing from our deep roots in Fairfield County, our grants team can guide your local giving to achieve your goals and maximize impact.



STREAMLINED CHARITABLE ADMINISTRATION

As your philanthropic partner, we take care of grant management, paperwork, and compliance — whether that's through a corporate donor-advised fund or providing administrative services — allowing you to focus on what you do best.



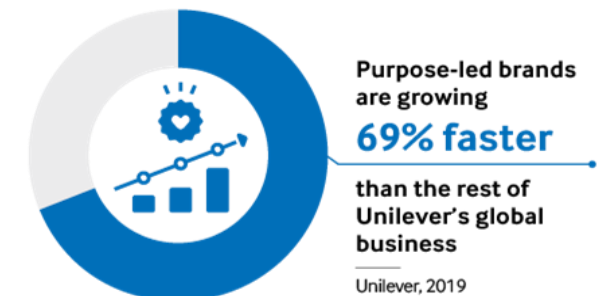
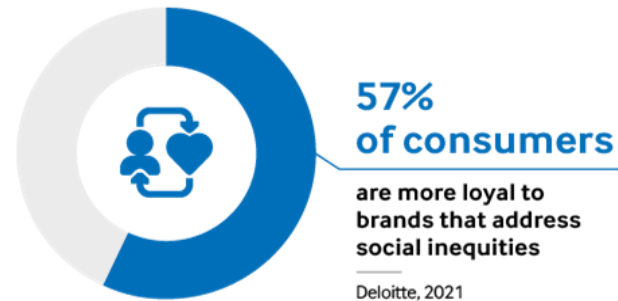
ACCESS TO LOCAL, TRUSTED EXPERTS IN CHARITABLE GIVING

Our team is well-versed in the intricacies of charitable giving, helping leaders make informed, strategic decisions about your philanthropy.

Benefits of Strong Community Partnership

- **Employee Morale & Engagement** - Opportunities to engage in corporate philanthropy provide a sense of satisfaction and pride in work as employees join you in giving back.
- **Reputation** - Position your company as a local philanthropic leader. 70% of millennials stated they would pay more for a product/ service if they knew the company championed a local cause.
- **Teamwork** - Corporate giving opportunities bring people from all levels of your organization together to work towards a common goal.
- **Community Impact** - Your support builds a stronger community where your employees and customers work, live, and play.

BRANDS WITH SOCIAL PURPOSE DRIVE GROWTH



When you're recognized as a company that cares
– about health, housing, young people, working
families and more – your brand benefits.

It Makes Business Sense

\$13.3 billion more
in aggregate incomes



33K more homeowners



84K more people
with a college degree



\$15.6 billion more
in the county's economy*



\$603 million more
local property tax revenue



\$1.2 billion more
state income tax revenue

Inclusive Growth is Smart Growth For Employers



Stronger workforce pipelines



Regional economic stability



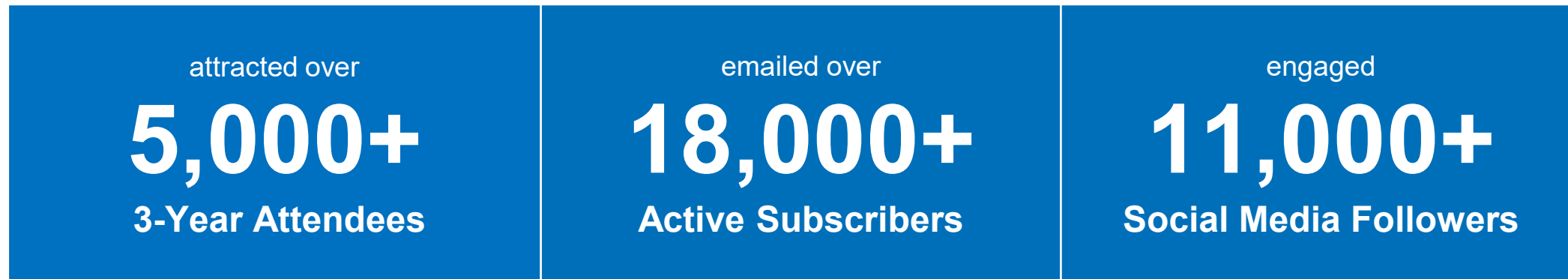
Market growth



Brand leadership

Marketing & Promotional Reach

As our partner, FCCF will promote your community investment to our deep, influential network of Fairfield County community leaders, nonprofit staff and executives, corporate decision-makers and civic influencers as part of planned or customized content and communications campaigns.



- Targeted email and digital campaign, averaging 5 touch points per event
- Paid, hyperlocal social campaigns across Meta and LinkedIn
- Visibility with Fairfield County residents and key stakeholder

We can collaborate with your marketing team on strategic campaigns.

Investment Levels

\$50,000+	\$25,000	\$15,000	\$5,000	\$2,500
<p><u>VISIONARY PARTNER</u></p> <p>All benefits of Leadership Partner plus:</p> <ul style="list-style-type: none"> • Dedicated media creation such as a video highlight reel, post-event email, event signage or experiences, paid advertising, co-authored Op-Eds, or other partnership storytelling – let's create together! • Exclusive briefing with FCCF's CEO • Podium opportunity to welcome guests to events • Presenting Sponsor alongside Host/Co-Chairs in program communications and/or pre- and post-event promotions • VIP ticket package to signature event or event series 	<p><u>LEADERSHIP PARTNER</u></p> <p>All benefits of Impact Partner plus:</p> <ul style="list-style-type: none"> • Sponsored content such as newsletter articles, blog posts, or social media • Briefing with FCCF's Executive Leadership • Premier logo featured in program communications and/or pre- and post-event promotions including paid advertising, and any print materials • Upgraded ticket package to signature event or event series 	<p><u>IMPACT PARTNER</u></p> <p>All benefits of Community Partner plus:</p> <ul style="list-style-type: none"> • Custom digital invitation for your event guests • Logo featured in program communications and/or pre- and post-event promotions including social media and evites • Logo featured in event signage • Sponsor ticket package to signature event or event series 	<p><u>COMMUNITY PARTNER</u></p> <p>All benefits of Sustaining Partner plus:</p> <ul style="list-style-type: none"> • Employee learning opportunity with FCCF staff • Logo inclusion in program communications and/or pre- and post-event promotions including newsletters, website/landing page, and registration form • Additional event ticket 	<p><u>SUSTAINING PARTNER</u></p> <ul style="list-style-type: none"> • Recognition for helping to create lasting impact in FCCF's Annual Report • Listed in program communications and/or pre- and post-event promotions including newsletters, website/landing page, and registration form • Recognition in press releases • Verbal recognition at events • Event ticket

Investment Levels	VISIONARY PARTNER	LEADERSHIP PARTNER	IMPACT PARTNER	COMMUNITY PARTNER	SUSTAINING PARTNER
	(\$50,000 +)	(>\$25,000)	(>\$15,000)	(>\$5,000)	(>\$2,500)
Recognition in FCCF Annual Report	✓	✓	✓	✓	✓
Listing in program communications (newsletters, website, landing page, registration)	✓	✓	✓	✓	✓
Recognition in press releases	✓	✓	✓	✓	✓
Verbal recognition at events	✓	✓	✓	✓	✓
Event ticket(s)	VIP Package	Upgraded Package	Sponsor Package	2 tickets	1 ticket
Employee learning opportunity with FCCF staff	✓	✓	✓	✓	—
Logo inclusion in program communications & promotions	✓	✓	✓	✓	—
Logo featured in event signage	✓	✓	✓	—	—
Sponsored content (newsletter, blog post, social media)	✓	✓	—	—	—
Premier logo placement (print, paid ads, promotions)	✓	✓	—	—	—
Podium opportunities at events	✓	—	—	—	—
Presenting Sponsor recognition alongside Host/Co-Chairs	✓	—	—	—	—
Exclusive briefing with FCCF CEO	✓	—	—	—	—
Dedicated partnership storytelling (video, email, signage, Op-Ed, paid ads, etc.)	✓	—	—	—	—

Let's Connect!

We welcome the opportunity to connect and discuss additional details and custom offerings

Contact Us!



Rebecca Mandell

Director, Corporate & Foundation Relations
RMandell@FCCFoundation.org
203-750-3241



Fritny Fontilus

Associate, Philanthropic Services
FFontilus@FCCFoundation.org
203-750-3216



Fairfield County's Community Foundation
40 Richards Avenue | Norwalk, CT 06854 | (203) 750-3200

 FCCFoundation.org/blog

 [FCCFoundation_CT](https://www.instagram.com/FCCFoundation_CT)

 [FCCFoundation](https://www.facebook.com/FCCFoundation)

 [Fairfield County's Community Foundation](https://www.linkedin.com/company/Fairfield-County-s-Community-Foundation)



About Us



OUR MISSION

We partner with our community to create a county where every person has an equitable opportunity to thrive.



OUR VALUES

FCCF's work is guided by six core values of equity, inclusivity, collaboration, humility, respect, and courage.



OUR PEOPLE

Our staff and board members have extensive knowledge of philanthropy and deep roots in Fairfield County.

2025 By The Numbers



\$26.9 million
in total grants awarded



445 scholarships
awarded to Fairfield County
students totaling
\$1.7 million



746 grants
were made to nonprofits
serving Fairfield County



\$3.1 million
in strategic grants
to nonprofits
Advocacy • Economic Opportunity
Health • Women & Girls • Youth

We Collaborate Across Sectors To Create More Opportunity In Fairfield County

Together, we can make the biggest impact by focusing on these important areas:



Areas of Impact



YOUTH EDUCATION & CAREER DEVELOPMENT

We can invest in early preparation for college and careers, helping students achieve success over the long term.



INCOME & ASSET BUILDING

We can expand access to economic opportunities so everyone can earn a living wage and save for the future.



HOUSING OPPORTUNITY

We can support access to safe, and affordable homes, helping individuals and families maintain homes in a neighborhood where they want to live.

Areas of Impact



HEALTH EQUITY FOR WOMEN & GIRLS

We can increase access to high-quality, culturally responsive care so women and girls can achieve better life outcomes.



CIVIC ENGAGEMENT & STRONG COMMUNITIES

We can create a community where everyone has an opportunity to be empowered to vote, speak up, and get involved in shaping their communities.



CENTER FOR NONPROFIT EXCELLENCE

We can strengthen the nonprofit sector - and its staff, board, and volunteer leaders - so they can deliver on their missions more effectively.